

External wall - awrhho01a-14

external wall, timber frame construction, ventilated, without dry lining, with cladding, other surface

Performance rating

Fire protection performance REI from inside 60
 REI from outside 30
 maximum ceiling height = 3 m; maximum load $E_{d,fi} = 32,0 \text{ kN/m}$
 Classified by HFA
 Classified by HFA

Germany

F60 (from inside)/F30 (from outside)
 Load $E_{d,fi}$ according to the German certification document
 Corresponding proof: manufacturer-specific

Thermal performance U 0.21 $\text{W}/(\text{m}^2\text{K})$
 Diffusion suitable

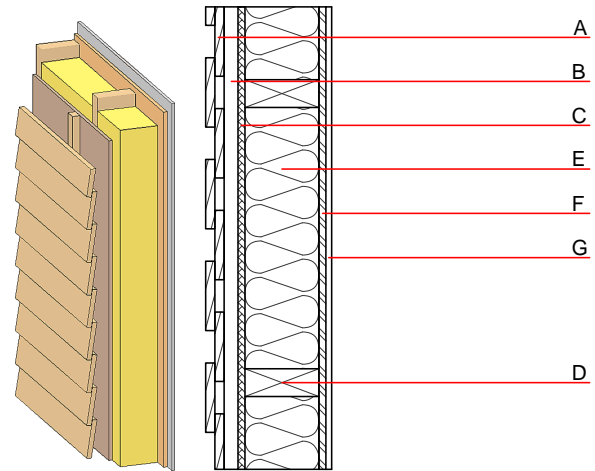
Calculated by TUM

Acoustic performance $R_w (C; C_{tr})$ 48(-2;-8) dB
 $L_{n,w} (C_i)$

Assessed by Müller-BBM

Mass per unit area m 61.00 kg/m^2

Calculation based on gypsum plaster board type DF



Register of building materials used for this application, cross-section (from outside to inside, dimensions in mm)

	Thickness	Building material	Thermal performance				Reaction to fire EN
			λ	μ min - max	ρ	c	
A	24.0	larch wood external wall cladding	0.155	150	600	1.600	D
B	30.0	spruce wood battens offset (30/50; 30/80) - ventilation	0.120	50	450	1.600	D
C	15.0	fibreboard (MDF)	0.140	11	600	1.700	D
D	200.0	construction timber (60/...; e=625)	0.120	50	450	1.600	D
E	200.0	Wood fibre insulation [039; 45]	0.039	1 - 2	45	2.100	E
F	15.0	OSB (sealed with airtight tape)	0.130	200	600	1.700	D
G	15.0	gypsum plaster board type DF or	0.250	10	800	1.050	A2
G	15.0	gypsum fibre board	0.320	21	1000	1.100	A2

Sustainability rating (per m^2)

Database ecoinvent

O13_{Kon} 22.0

Calculated by HFA

Database GaBi (ÖKOBAUDAT)

Built-in renewable materials kg 52.260
 Biogenic carbon in $\text{kg CO}_2\text{-e}$. kg CO_2 75.690
 Energy use of Primary Energy MJ 1018.730
 Share of renewable PE % 37.340

Calculated by TUM

Details of sustainability rating

Database ecoinvent

Lifecycle (Phases)	GWP [kg CO ₂ -e.]	AP [kg SO ₂ -e.]	EP [kg PO ₄ -e.]	ODP [kg R11-e.]	POCP [kg Ethen-e.]	
A1 - A3	-59.523	0.129	0.046	1,89E-6	0.007	

Lifecycle (Phases)	PERE [MJ]	PERM [MJ]	PERT [MJ]	PENRE [MJ]	PENRM [MJ]	PENRT [MJ]
A1 - A3	106.087	845.563	951.650	394.994	44.987	439.981

Database GaBi (ÖKOBAUDAT)

Lifecycle (Phases)	GWP [kg CO ₂ -e.]	AP [kg SO ₂ -e.]	EP [kg PO ₄ -e.]	ODP [kg R11-e.]	POCP [kg Ethen-e.]	
A1 - A3	-81.879	0.115	0.025	1,54E-6	0.033	
C1 - C4	111.632	0.002	0.000	9,49E-8	0.000	
A1 - C4	30.115	0.119	0.025	1,64E-6	0.034	

Lifecycle (Phases)	PERE [MJ]	PERM [MJ]	PERT [MJ]	PENRE [MJ]	PENRM [MJ]	PENRT [MJ]
A1 - A3	378.185	1173.007	1551.468	610.190	54.340	664.620
C1 - C4	1.839	-1168.720	-1166.882	22.910	-53.398	-30.490
A1 - C4	380.403	4.546	385.224	638.329	0.994	639.420