

External wall - awrhho01a-15

external wall, timber frame construction, ventilated, without dry lining, with cladding, other surface

Performance rating

Fire protection performance REI from inside 60
 REI from outside 30
 maximum ceiling height = 3 m; maximum load $E_{d,fi} = 32,0 \text{ kN/m}$
 Classified by HFA
 Classified by HFA

Germany

F60 (from inside)/F30 (from outside)
 Load $E_{d,fi}$ according to the German certification document
 Corresponding proof: manufacturer-specific

Thermal performance U 0.18 $\text{W}/(\text{m}^2\text{K})$
 Diffusion suitable

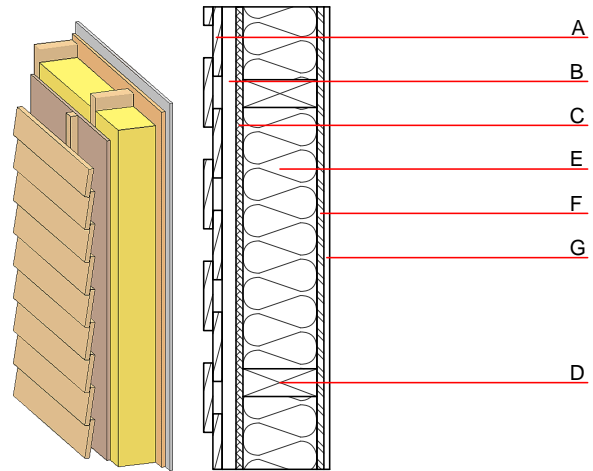
Calculated by TUM

Acoustic performance $R_w (C; C_{tr})$ 49(-2;-8) dB
 $L_{n,w} (C_i)$

Assessed by Müller-BBM

Mass per unit area m 65.70 kg/m^2

Calculation based on gypsum plaster board type DF



Register of building materials used for this application, cross-section (from outside to inside, dimensions in mm)

	Thickness	Building material	Thermal performance				Reaction to fire EN
			λ	μ min - max	ρ	c	
A	24.0	larch wood external wall cladding	0.155	150	600	1.600	D
B	30.0	spruce wood battens offset (30/50; 30/80) - ventilation	0.120	50	450	1.600	D
C	15.0	fibreboard (MDF)	0.140	11	600	1.700	D
D	240.0	construction timber (60/...; e=625)	0.120	50	450	1.600	D
E	240.0	mineral wool [040; 30; $\geq 1000^\circ\text{C}$]	0.040	1	30	1.030	A1
F	15.0	OSB (sealed with airtight tape)	0.130	200	600	1.700	D
G	15.0	gypsum plaster board type DF or	0.250	10	800	1.050	A2
G	15.0	gypsum fibre board	0.320	21	1000	1.100	A2

Sustainability rating (per m^2)

Database ecoinvent

$OI3_{kon}$ 33.1

Calculated by HFA

Database GaBi (ÖKOBAUDAT)

Built-in renewable materials kg 48.410
 Biogenic carbon in $\text{kg CO}_2\text{-e}$. kg CO_2 70.700
 Energy use of Primary Energy MJ 712.560
 Share of renewable PE % 29.260

Calculated by TUM

Details of sustainability rating

Database ecoinvent

Lifecycle (Phases)	GWP [kg CO ₂ -e.]	AP [kg SO ₂ -e.]	EP [kg PO ₄ -e.]	ODP [kg R11-e.]	POCP [kg Ethen-e.]	
A1 - A3	-42.285	0.187	0.054	1,79E-6	0.033	

Lifecycle (Phases)	PERE [MJ]	PERM [MJ]	PERT [MJ]	PENRE [MJ]	PENRM [MJ]	PENRT [MJ]
A1 - A3	87.982	728.859	816.841	424.452	30.982	455.433

Database GaBi (ÖKOBAUDAT)

Lifecycle (Phases)	GWP [kg CO ₂ -e.]	AP [kg SO ₂ -e.]	EP [kg PO ₄ -e.]	ODP [kg R11-e.]	POCP [kg Ethen-e.]	
A1 - A3	-49.978	0.131	0.022	1,80E-6	0.030	
C1 - C4	78.988	0.003	0.003	9,96E-8	0.000	
A1 - C4	31.782	0.136	0.025	1,91E-6	0.030	

Lifecycle (Phases)	PERE [MJ]	PERM [MJ]	PERT [MJ]	PENRE [MJ]	PENRM [MJ]	PENRT [MJ]
A1 - A3	207.134	822.668	1030.232	485.320	35.974	521.400
C1 - C4	0.992	-817.086	-816.096	12.250	-24.390	-12.140
A1 - C4	208.513	5.840	214.783	504.051	11.636	515.800