

External wall - awrhho01a-06

external wall, timber frame construction, ventilated, without dry lining, with cladding, other surface

Performance rating

Fire protection performance	REI from inside	60
	REI from outside	30

maximum ceiling height = 3 m; maximum load $E_{d,fi} = 32,0 \text{ kN/m}$
 Classified by MA39
 Classified by HFA

Thermal performance	U	0.26 $\text{W}/(\text{m}^2\text{K})$
	Diffusion	suitable

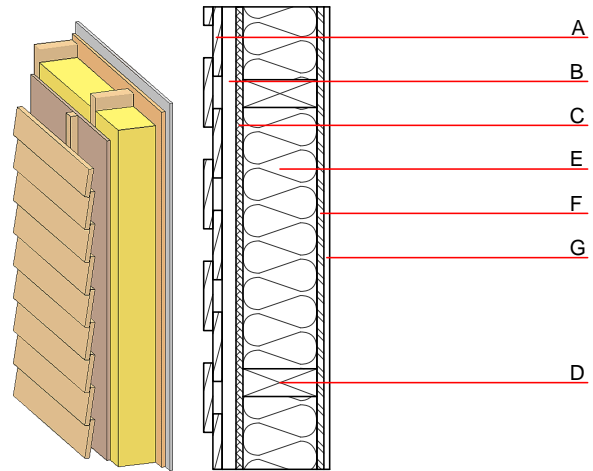
Calculated by HFA

Acoustic performance	R_w (C;C _{tr})	47(-2;-8) dB
	$L_{n,w}$ (C _i)	

Battens for the ventilation space screwed onto the structural timber result in an $R_w(C;C_{tr})=43(-1;-7)$ dB
 Assessed by MA39

Mass per unit area	m	47.30 kg/m^2
---------------------------	---	------------------------------

Calculation based on gypsum plaster board type DF



Register of building materials used for this application, cross-section (from outside to inside, dimensions in mm)

	Thickness	Building material	Thermal performance				Reaction to fire EN
			λ	μ min – max	ρ	c	
A	24.0	larch wood external wall cladding	0.155	150	600	1.600	D
B	30.0	spruce wood battens offset (30/50; 30/80) - ventilation	0.120	50	450	1.600	D
C	15.0	fibreboard (MDF)	0.140	11	600	1.700	D
D	160.0	construction timber (60/...; e=625)	0.120	50	450	1.600	D
E	160.0	cellulose fibre [040; E]	0.040	1 - 2	55	2.000	E
F	15.0	OSB (sealed with airtight tape)	0.130	200	600	1.700	D
G	12.5	gypsum plaster board type DF or	0.250	10	800	1.050	A2
G	12.5	gypsum fibre board	0.320	21	1000	1.100	A2

Sustainability rating (per m²)

Database ecoinvent

O13_{kon} 17.8

Calculated by HFA

Details of sustainability rating

Database ecoinvent

Lifecycle (Phases)	GWP [kg CO ₂ -e.]	AP [kg SO ₂ -e.]	EP [kg PO ₄ -e.]	ODP [kg R11-e.]	POCP [kg Ethen-e.]	
A1 - A3	-56.905	0.117	0.042	1,54E-6	0.006	

Lifecycle (Phases)	PERE [MJ]	PERM [MJ]	PERT [MJ]	PENRE [MJ]	PENRM [MJ]	PENRT [MJ]
A1 - A3	89.754	745.483	835.238	320.905	30.633	351.539