

External wall - awrhho01a-07

external wall, timber frame construction, ventilated, without dry lining, with cladding, other surface

Performance rating

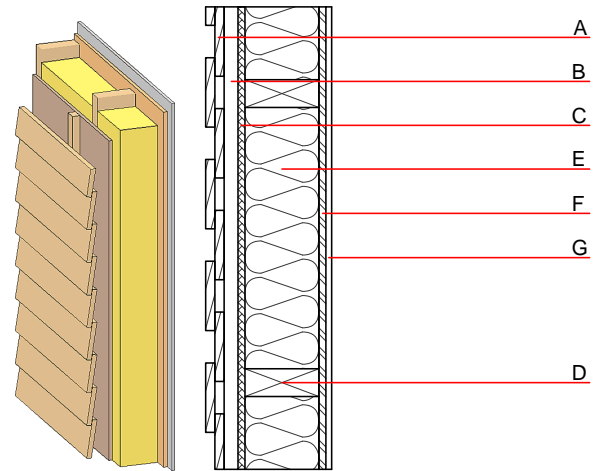
Fire protection performance
 REI from inside 60
 REI from outside 30
 maximum ceiling height = 3 m; maximum load $E_{d,fi} = 32,0 \text{ kN/m}$
 Classified by MA39
 Classified by HFA

Thermal performance
 U 0.28 $\text{W}/(\text{m}^2\text{K})$
 Diffusion suitable
 Calculated by HFA

Acoustic performance
 $R_w (C;C_{tr})$ 47(-2;-8) dB
 $L_{n,w} (C_i)$
 Battens for the ventilation space screwed onto the structural timber result in an $R_w(C;C_{tr})=43(-1;-7)$ dB
 Assessed by MA39

Mass per unit area m 38.70 kg/m^2

Calculation based on gypsum plaster board type DF



Register of building materials used for this application, cross-section (from outside to inside, dimensions in mm)

	Thickness	Building material	Thermal performance				Reaction to fire EN
			λ	μ min – max	ρ	c	
A	24.0	larch wood external wall cladding	0.155	150	600	1.600	D
B	30.0	spruce wood battens offset (30/50; 30/80) - ventilation	0.120	50	450	1.600	D
C	15.0	fibreboard (MDF)	0.140	11	600	1.700	D
D	160.0	construction timber (60/...; e=625)	0.120	50	450	1.600	D
E	160.0	sheep wool [0,041; R=26]	0.041	1	30	1.720	E
F	15.0	OSB (sealed with airtight tape)	0.130	200	600	1.700	D
G	12.5	gypsum plaster board type DF or	0.250	10	800	1.050	A2
G	12.5	gypsum fibre board	0.320	21	1000	1.100	A2

Sustainability rating (per m^2)

Database ecoinvent

$O13_{kon}$ 19.1

Calculated by HFA

Details of sustainability rating

Database ecoinvent

Lifecycle (Phases)	GWP [kg CO ₂ -e.]	AP [kg SO ₂ -e.]	EP [kg PO ₄ -e.]	ODP [kg R11-e.]	POCP [kg Ethen-e.]	
A1 - A3	-47.663	0.107	0.038	1,77E-6	0.007	

Lifecycle (Phases)	PERE [MJ]	PERM [MJ]	PERT [MJ]	PENRE [MJ]	PENRM [MJ]	PENRT [MJ]
A1 - A3	82.604	753.176	835.780	348.727	32.369	381.096