

External wall - awropi02b-09

external wall, timber frame construction, not ventilated, with dry lining, with rendering, other surface

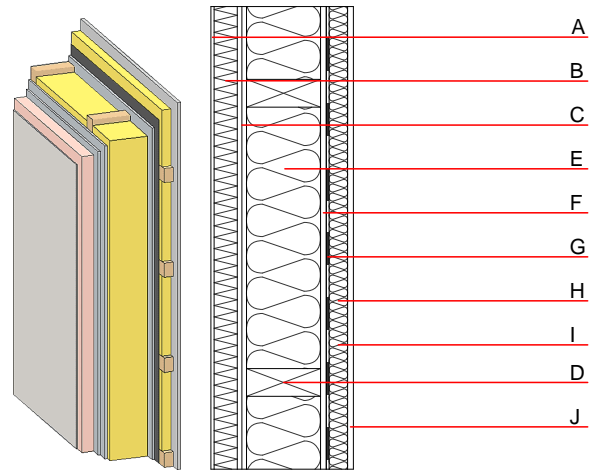
Performance rating

Fire protection performance REI from inside 60
 REI from outside 60
 maximum ceiling height = 3 m; maximum load $E_{d,fi} = 50,0 \text{ kN/m}$
 Classified by MA39

Thermal performance U 0.17 $\text{W}/(\text{m}^2\text{K})$
 Diffusion suitable
 Calculated by HFA

Acoustic performance $R_w (C;C_{tr})$ 47(-2;-5) dB
 $L_{n,w} (C_i)$
 Vertical battens for the dry lining screwed onto the ledger beams lead to an $R_w(C;C_{tr})=44(-1;-5)$ dB
 Assessed by MA39

Mass per unit area m 70.30 kg/m^2
 Calculation based on GF



Note: e=625

Register of building materials used for this application, cross-section (from outside to inside, dimensions in mm)

	Thickness	Building material	Thermal performance				Reaction to fire EN
			λ	μ min - max	ρ	c	
A	4.0	plaster	1.000	10 - 35	2000	1.130	A1
B	50.0	Polystyrene EPS-F [0,040]	0.040	20 - 50	17	1.450	E
C	25.0	gypsum fibre board (2x10 mm)	0.320	21	1000	1.100	A2
D	160.0	construction timber (60/..; e=*)	0.120	50	450	1.600	D
E	160.0	cellulose fibre [0,040; R=55]	0.040	1 - 2	55	2.000	B
F	12.5	gypsum fibre board	0.320	21	1000	1.100	A2
G		vapour barrier $s_d \geq 13\text{m}$				1000	
H	40.0	spruce wood cross battens (a=400) or battens offset)	0.120	50	450	1.600	D
I	40.0	cellulose fibre [040; E]	0.040	1 - 2	55	2.000	E
J	12.5	gypsum plaster board type DF or	0.250	10	800	1.050	A2
J	12.5	gypsum fibre board	0.320	21	1000	1.100	A2

Sustainability rating (per m^2)

Database ecoinvent

$OI3_{kon}$ 22.1

Calculated by HFA

Details of sustainability rating

Database ecoinvent

Lifecycle (Phases)	GWP [kg CO ₂ -e.]	AP [kg SO ₂ -e.]	EP [kg PO ₄ -e.]	ODP [kg R11-e.]	POCP [kg Ethen-e.]	
A1 - A3	-10.484	0.087	0.033	1,93E-6	0.010	

Lifecycle (Phases)	PERE [MJ]	PERM [MJ]	PERT [MJ]	PENRE [MJ]	PENRM [MJ]	PENRT [MJ]
A1 - A3	60.363	274.842	335.206	328.716	37.801	366.517