

Floor towards attic (uninhabitable) - ddrtxn04a-03

floor towards attic (uninhabitable), timber frame construction, not suspended, dry, other surface

Performance rating

Fire protection performance REI 30

maximum span = 5 m; maximum load $E_{d,fi} = 3,66 \text{ kN/m}^2$
 Classified by IBS

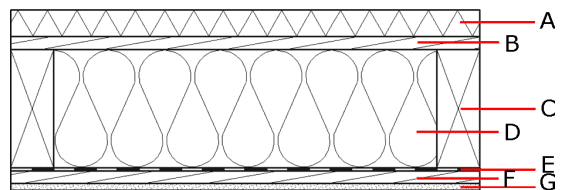
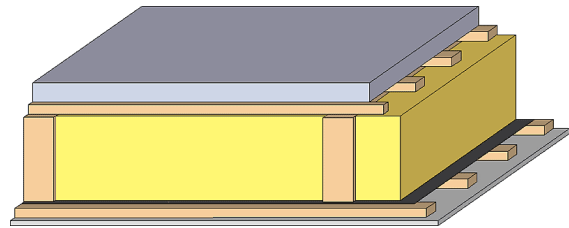
Thermal performance U Diffusion 0.17 $\text{W}/(\text{m}^2\text{K})$
 suitable

Calculated by HFA

Acoustic performance $R_w (C;C_{tr})$ 43(-1;-5) dB
 $L_{n,w} (C_i)$

Mass per unit area m 72.90 kg/m^2

Calculation based on gypsum plaster board type DF



Note: e=625

Register of building materials used for this application, cross-section (from outside to inside, dimensions in mm)

	Thickness	Building material	Thermal performance				Reaction to fire EN
			λ	μ min - max	ρ	c	
A	50.0	Magnesite-bound lightweight wood wool board	0.120	2 - 5	700	1.400	
B	24.0	spruce wood cladding with spacing of cladding boards(24/100); a=400	0.120	50	450	1.600	D
C	220.0	construction timber (80/...; e=*)	0.120	50	450	1.600	D
D	220.0	mineral wool [035; 50; <1000°C]	0.035	1	50	1.030	A1
E		vapour barrier sd \geq 2m			1000		
F	24.0	spruce wood cladding with spacing of cladding boards(24/100); a=400	0.120	50	450	1.600	D
G	12.5	gypsum plaster board type DF or	0.250	10	800	1.050	A2
G	12.5	gypsum fibre board	0.320	21	1000	1.100	A2

Sustainability rating (per m^2)

Database ecoinvent

O13_{kon} 46.8

Calculated by HFA

Details of sustainability rating

Database ecoinvent

Lifecycle (Phases)	GWP [kg CO ₂ -e.]	AP [kg SO ₂ -e.]	EP [kg PO ₄ -e.]	ODP [kg R11-e.]	POCP [kg Ethen-e.]	
A1 - A3	-5.117	0.196	0.085	3,68E-6	0.011	

Lifecycle (Phases)	PERE [MJ]	PERM [MJ]	PERT [MJ]	PENRE [MJ]	PENRM [MJ]	PENRT [MJ]
A1 - A3	49.929	455.301	505.230	625.729	20.201	645.930