

Internal wall - iwrxo01a-00

internal wall, timber frame construction, without dry lining, other surface

Performance rating

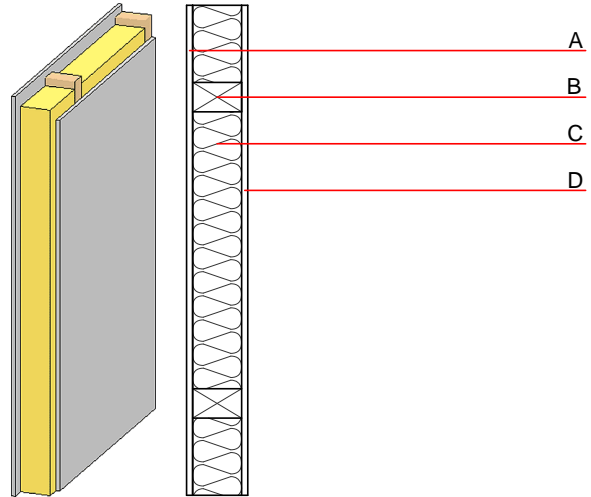
Fire protection performance REI 30

maximum ceiling height = 3 m; maximum load $E_{d,fi} = 19,2 \text{ kN/m}^2$
 Classified by MA39
 Classified by HFA

Acoustic performance $R_w (C; C_{tr})$
 $L_{n,w} (C_i)$

Mass per unit area m 25.50 kg/m²

Calculation based on GF



Note: The fire resistance is only valid when wall is used as partition with only one side exposed to fire.
 (B=60/100); e=625

Register of building materials used for this application, cross-section (from outside to inside, dimensions in mm)

	Thickness	Building material	Thermal performance				Reaction to fire EN
			λ	μ min – max	ρ	c	
A	12.5	gypsum plaster board type DF	0.250	10	800	1.050	A2
A	12.5	gypsum fibre board	0.320	21	1000	1.100	A2
B	100.0	construction timber (60/100 or 60/160; e=*)	0.120	50	450	1.600	D
C	100.0	mineral wool [040; ≥ 16 ; <1000°C]	0.040	1	16	1.030	A1
D	12.5	gypsum plaster board type DF	0.250	10	800	1.050	A2
D	12.5	gypsum fibre board	0.320	21	1000	1.100	A2

Sustainability rating (per m²)

Database ecoinvent

013_{kon} 11.4

Calculated by HFA

Details of sustainability rating

Database ecoinvent

Lifecycle (Phases)	GWP [kg CO ₂ -e.]	AP [kg SO ₂ -e.]	EP [kg PO ₄ -e.]	ODP [kg R11-e.]	POCP [kg Ethen-e.]	
A1 - A3	1.087	0.041	0.019	1,13E-6	0.003	

Lifecycle (Phases)	PERE [MJ]	PERM [MJ]	PERT [MJ]	PENRE [MJ]	PENRM [MJ]	PENRT [MJ]
A1 - A3	12.521	92.514	105.035	166.836	3.484	170.320