

External wall - awmhh03b-01

external wall, solid wood construction, ventilated, with dry lining, with cladding, other surface

Performance rating

Fire protection performance REI from inside 120
 REI from outside 60

maximum ceiling height = 3 m; maximum load $E_{d,fi} = 35,0 \text{ kN/lfm}$
 Classified by HFA

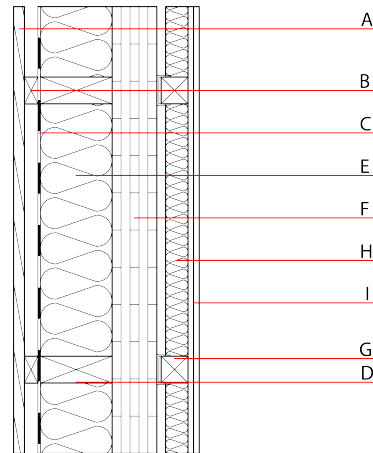
Thermal performance U 0.17 $\text{W}/(\text{m}^2\text{K})$
 Diffusion suitable

Calculated by HFA

Acoustic performance $R_w (C; C_{tr})$ 54(-4;-11) dB
 $L_{n,w} (C_i)$

frequency range 50-3500: $C_{50-3500} -6 \text{ dB}$; $C_{tr,50-3500} -15 \text{ dB}$
 Assessed by HFA

Mass per unit area m 100.20 kg/m^2



Register of building materials used for this application, cross-section (from outside to inside, dimensions in mm)

	Thickness	Building material	Thermal performance				Reaction to fire EN
			λ	μ min – max	ρ	c	
A	24.0	larch wood external wall cladding, e.g. clapboard facade	0.155	150	600	1.600	D
B	30.0	spruce wood battens vertical (30/60) ventilation	0.120	50	450	1.600	D
C		vapour-permeable membrane $sd \leq 0,3\text{m}$					
D	160.0	construction timber (60/...; e=625)	0.120	50	450	1.600	D
E	160.0	Wood fibre insulation [039; 45]	0.039	1 - 2	45	2.100	E
F	100.0	cross laminated timber 5-ply	0.130	50	500	1.600	D
G	70.0	battens (60/60) vertical on resilient clips, e=625	0.120	50	450	1.600	
H	50.0	mineral wool [040; 11; <1000°C]	0.040	1	11	1.030	A1
I	25.0	gypsum plaster board type DF (2x12,5) or	0.250	10	800	1.050	A2
I	25.0	gypsum fibre board (2x12,5)	0.320	21	1000	1.100	A2

Sustainability rating (per m^2)

Database ecoinvent

OI_{kon} 33.1

Calculated by HFA

Details of sustainability rating

Database ecoinvent

Lifecycle (Phases)	GWP [kg CO ₂ -e.]	AP [kg SO ₂ -e.]	EP [kg PO ₄ -e.]	ODP [kg R11-e.]	POCP [kg Ethen-e.]	
A1 - A3		0.186	0.082	3,49E-6	0.054	

Lifecycle (Phases)	PERE [MJ]	PERM [MJ]	PERT [MJ]	PENRE [MJ]	PENRM [MJ]	PENRT [MJ]
A1 - A3	120.139	1218.850	1338.990	643.667	34.788	678.454