

External wall - awrhh01a-10

external wall, timber frame construction, ventilated, with dry lining, with cladding, other surface

Performance rating

Fire protection performance	REI from inside	45
	REI from outside	30

maximum ceiling height = 3 m; maximum load $E_{d,fi} = 19,2 \text{ kN/m}$
 Classified by HFA

Thermal performance	U	0.24 W/(m ² K)
	Diffusion	suitable

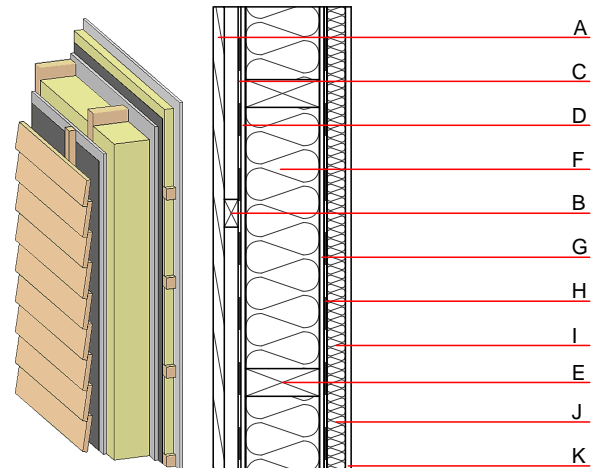
Calculated by HFA

Acoustic performance	$R_w (C; C_{tr})$	50(-3;-10) dB
	$L_{n,w} (C_i)$	

Battens for the ventilation space screwed onto the structural timber together with vertical battens for the dry lining screwed directly onto the ledger beams will result in $R_w(C; C_{tr})=43(-1;-5) \text{ dB}$
 Assessed by MA39

Mass per unit area	m	43.30 kg/m ²
--------------------	---	-------------------------

Calculation based on GF



Note: e=625

Register of building materials used for this application, cross-section (from outside to inside, dimensions in mm)

	Thickness	Building material	Thermal performance				Reaction to fire EN
			λ	$\mu \text{ min} - \text{max}$	ρ	c	
A	24.0	larch wood external wall cladding	0.155	150	600	1.600	D
B	30.0	spruce wood battens offset (30/50; 30/80) - ventilation	0.120	50	450	1.600	D
C		wind barrier			1000		
D	12.5	gypsum fibre board	0.320	21	1000	1.100	A2
E	160.0	construction timber (60/..; e=*)	0.120	50	450	1.600	D
F	160.0	sheep wool [0,041; R=26]	0.041	1	30	1.720	E
G	10.0	gypsum fibre board	0.320	21	1000	1.100	A2
H		vapour barrier sd \geq 2m			1000		
I	40.0	spruce wood cross battens (a=400) or battens offset)	0.120	50	450	1.600	D
J	40.0	sheep wool [0,041; R=26]	0.041	1	30	1.720	E
K	12.5	gypsum fibre board or	0.320	21	1000	1.100	A2
K	12.5	gypsum plaster board type DF	0.250	10	800	1.050	A2

Sustainability rating (per m²)

Database ecoinvent

OI3 _{Kon}	16.0
--------------------	------

Calculated by HFA

Details of sustainability rating

Database ecoinvent

Lifecycle (Phases)	GWP [kg CO ₂ -e.]	AP [kg SO ₂ -e.]	EP [kg PO ₄ -e.]	ODP [kg R11-e.]	POCP [kg Ethen-e.]	
A1 - A3		0.070	0.033	1,94E-6	0.018	

Lifecycle (Phases)	PERE [MJ]	PERM [MJ]	PERT [MJ]	PENRE [MJ]	PENRM [MJ]	PENRT [MJ]
A1 - A3	82.055	513.108	595.163	309.008	11.853	320.861