

## External wall - awrhh01a-02

external wall, timber frame construction, ventilated, with dry lining, with cladding, other surface

### Performance rating

Fire protection performance	REI from inside	45
	REI from outside	30
maximum ceiling height = 3 m; maximum load $E_{d,fi}$ = 19,2 kN/m		
Classified by HFA		

Thermal performance	U	0.26 W/(m <sup>2</sup> K)
	Diffusion	suitable

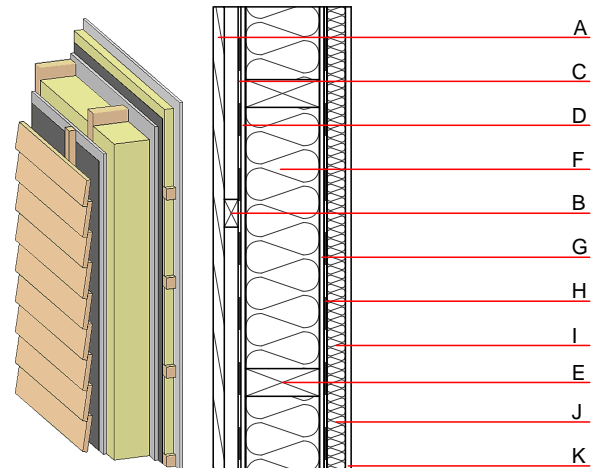
Calculated by HFA

Acoustic performance	$R_w$ (C;C <sub>tr</sub> )	49(-3;-10) dB
	$L_{n,w}$ (C <sub>i</sub> )	

Battens for the ventilation space screwed onto the structural timber together with vertical battens for the dry lining screwed directly onto the ledger beams will result in  $R_w(C;C_{tr})=43(-1;-5)$  dB  
Assessed by MA39

Mass per unit area	m	42.90 kg/m <sup>2</sup>
--------------------	---	-------------------------

Calculation based on GF



Note: e=625; J=without insulation

### Register of building materials used for this application, cross-section (from outside to inside, dimensions in mm)

	Thickness	Building material	Thermal performance				Reaction to fire EN
			$\lambda$	$\mu$ min – max	$\rho$	c	
A	24.0	larch wood external wall cladding	0.155	150	600	1.600	D
B	30.0	spruce wood battens offset (30/50; 30/80) - ventilation	0.120	50	450	1.600	D
C		wind barrier			1000		
D	12.5	gypsum fibre board	0.320	21	1000	1.100	A2
E	160.0	construction timber (60/..; e=*)	0.120	50	450	1.600	D
F	160.0	mineral wool [040; $\geq 16$ ; <1000°C]	0.040	1	16	1.030	A1
G	10.0	gypsum fibre board	0.320	21	1000	1.100	A2
H		vapour barrier $s_d \geq 2m$			1000		
I	40.0	spruce wood cross battens (a=400) or battens offset	0.120	50	450	1.600	D
J	40.0	air layer	0.000	1	1	1.008	
K	12.5	gypsum fibre board or	0.320	21	1000	1.100	A2
K	12.5	gypsum plaster board type DF	0.250	10	800	1.050	A2

### Sustainability rating (per m<sup>2</sup>)

#### Database ecoinvent

013 <sub>Kon</sub>	20.1
--------------------	------

Calculated by HFA

## Details of sustainability rating

### Database ecoinvent

Lifecycle (Phases)	GWP [kg CO <sub>2</sub> -e.]	AP [kg SO <sub>2</sub> -e.]	EP [kg PO <sub>4</sub> -e.]	ODP [kg R11-e.]	POCP [kg Ethen-e.]	
A1 - A3		0.091	0.043	1,97E-6	0.019	

Lifecycle (Phases)	PERE [MJ]	PERM [MJ]	PERT [MJ]	PENRE [MJ]	PENRM [MJ]	PENRT [MJ]
A1 - A3	84.608	411.795	496.403	333.367	10.862	344.229