

## External wall - awrhh02a-08

external wall, timber frame construction, ventilated, with dry lining, with cladding, other surface

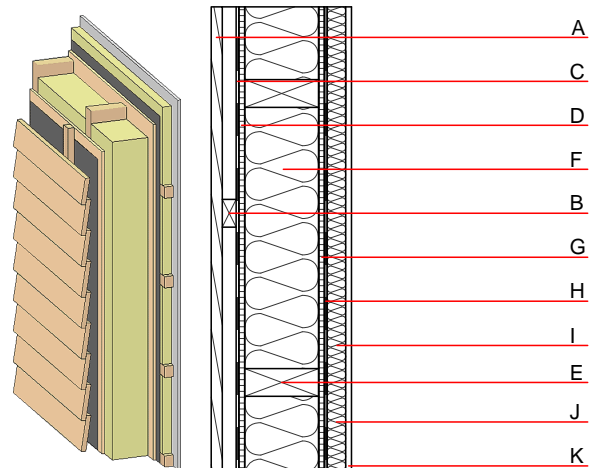
### Performance rating

**Fire protection performance**  
 REI from inside 60  
 REI from outside 30  
 maximum ceiling height = 3 m; maximum load  $E_{d,fi} = 19,2 \text{ kN/m}$   
 Classified by HFA

**Thermal performance**  
 U 0.21  $\text{W}/(\text{m}^2\text{K})$   
 Diffusion suitable  
 Calculated by HFA

**Acoustic performance**  
 $R_w (C;C_{tr})$  50(-3;-10) dB  
 $L_{n,w} (C_i)$   
 Battens for the ventilation space screwed onto the structural timber together with vertical battens for the dry lining screwed directly onto the ledger beams will result in  $R_w(C;Ctr)=43(-1;-5)$  dB  
 Assessed by MA39

**Mass per unit area** m 44.30  $\text{kg}/\text{m}^2$   
 Calculation based on CF



Note: e=625

### Register of building materials used for this application, cross-section (from outside to inside, dimensions in mm)

	Thickness	Building material	Thermal performance				Reaction to fire EN
			$\lambda$	$\mu$ min - max	$\rho$	c	
A	24.0	larch wood external wall cladding	0.155	150	600	1.600	D
B	30.0	spruce wood battens offset (30/50; 30/80) - ventilation	0.120	50	450	1.600	D
C		wind barrier			1000		
D	16.0	particleboard	0.130	50 - 100	700	1.700	D
E	160.0	construction timber (60/..; e=*)	0.120	50	450	1.600	D
F	160.0	mineral wool [038; $\geq 33$ ; $\geq 1000^\circ\text{C}$ ]	0.038	1	33	1.030	A1
G	16.0	particleboard	0.130	50 - 100	700	1.700	D
H		vapour barrier $s_d \geq 5\text{m}$			1000		
I	40.0	spruce wood cross battens (a=400) or battens offset)	0.120	50	450	1.600	D
J	40.0	mineral wool [038; $\geq 33$ ; $\geq 1000^\circ\text{C}$ ]	0.038	1	33	1.030	A1
K	12.5	gypsum plaster board type DF or	0.250	10	800	1.050	A2
K	12.5	gypsum fibre board	0.320	21	1000	1.100	A2

### Sustainability rating (per $\text{m}^2$ )

#### Database ecoinvent

$OI3_{Kon}$  32.9

Calculated by HFA

**Details of sustainability rating**

Database ecoinvent

Lifecycle (Phases)	GWP [kg CO <sub>2</sub> -e.]	AP [kg SO <sub>2</sub> -e.]	EP [kg PO <sub>4</sub> -e.]	ODP [kg R11-e.]	POCP [kg Ethen-e.]	
A1 - A3		0.161	0.057	1,78E-6	0.060	

Lifecycle (Phases)	PERE [MJ]	PERM [MJ]	PERT [MJ]	PENRE [MJ]	PENRM [MJ]	PENRT [MJ]
A1 - A3	89.494	697.688	787.182	478.196	53.916	532.112