

External wall - awrhh02a-09

external wall, timber frame construction, ventilated, with dry lining, with cladding, other surface

Performance rating

Fire protection performance	REI from inside	60
	REI from outside	30

maximum ceiling height = 3 m; maximum load $E_{d,fi} = 19,2 \text{ kN/m}$
 Classified by HFA

Thermal performance	U	0.21 $\text{W}/(\text{m}^2\text{K})$
	Diffusion	suitable

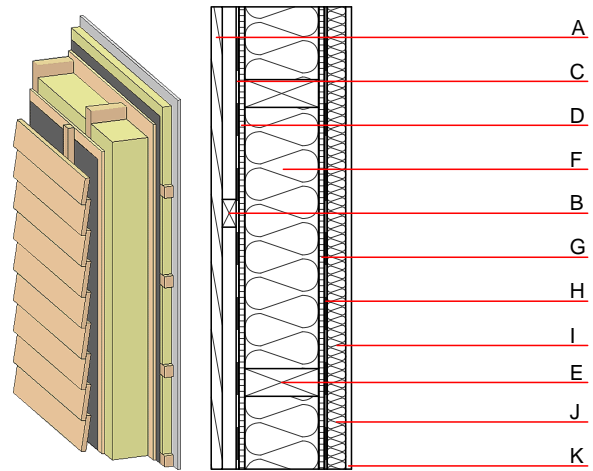
Calculated by HFA

Acoustic performance	$R_w (C;C_{tr})$	50(-3;-10) dB
	$L_{n,w} (C_i)$	

Battens for the ventilation space screwed onto the structural timber together with vertical battens for the dry lining screwed directly onto the ledger beams will result in $R_w(C;Ctr)=43(-1;-5)$ dB
 Assessed by MA39

Mass per unit area	m	48.20 kg/m^2
---------------------------	---	------------------------------

Calculation based on CF



Note: e=625

Register of building materials used for this application, cross-section (from outside to inside, dimensions in mm)

	Thickness	Building material	Thermal performance				Reaction to fire EN
			λ	μ min - max	ρ	c	
A	24.0	larch wood external wall cladding	0.155	150	600	1.600	D
B	30.0	spruce wood battens offset (30/50; 30/80) - ventilation	0.120	50	450	1.600	D
C		wind barrier			1000		
D	16.0	particleboard	0.130	50 - 100	700	1.700	D
E	160.0	construction timber (60/..; e=*)	0.120	50	450	1.600	D
F	160.0	cellulose fibre [0,040; R=55]	0.040	1 - 2	55	2.000	B
G	16.0	particleboard	0.130	50 - 100	700	1.700	D
H		vapour barrier $s_{d} \geq 5\text{m}$			1000		
I	40.0	spruce wood cross battens (a=400) or battens offset)	0.120	50	450	1.600	D
J	40.0	cellulose fibre [040; E]	0.040	1 - 2	55	2.000	E
K	12.5	gypsum plaster board type DF or	0.250	10	800	1.050	A2
K	12.5	gypsum fibre board	0.320	21	1000	1.100	A2

Sustainability rating (per m^2)

Database ecoinvent

$OI3_{Kon}$ 20.3

Calculated by HFA

Details of sustainability rating

Database ecoinvent

Lifecycle (Phases)	GWP [kg CO ₂ -e.]	AP [kg SO ₂ -e.]	EP [kg PO ₄ -e.]	ODP [kg R11-e.]	POCP [kg Ethen-e.]	
A1 - A3		0.109	0.048	1,69E-6	0.026	

Lifecycle (Phases)	PERE [MJ]	PERM [MJ]	PERT [MJ]	PENRE [MJ]	PENRM [MJ]	PENRT [MJ]
A1 - A3	94.199	797.848	892.046	392.002	53.916	445.918