

External wall - awrhi03a-02

external wall, timber frame construction, ventilated, with dry lining, with cladding, other surface

Performance rating

Fire protection performance	REI from inside	60
	REI from outside	30

maximum ceiling height = 3 m; maximum load $E_{d,fi} = 19,2 \text{ kN/m}$
 Classified by HFA

Thermal performance	U	0.25 W/(m ² K)
	Diffusion	suitable

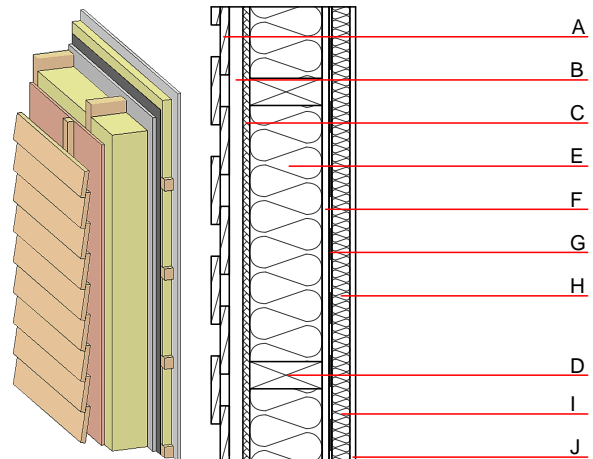
Calculated by HFA

Acoustic performance	$R_w (C;C_{tr})$	49(-3;-10) dB
	$L_{n,w} (C_i)$	

Battens for the ventilation space screwed onto the structural timber together with vertical battens for the dry lining screwed directly onto the ledger beams will result in $R_w(C;Ctr)=42(-1;-5)$ dB
 Assessed by MA39

Mass per unit area	m	46.60 kg/m ²
---------------------------	---	-------------------------

Calculation based on CF



Note: e=625; I=without insulation

Register of building materials used for this application, cross-section (from outside to inside, dimensions in mm)

	Thickness	Building material	Thermal performance				Reaction to fire EN
			λ	μ min – max	ρ	c	
A	24.0	larch wood external wall cladding	0.155	150	600	1.600	D
B	30.0	spruce wood battens offset (30/50; 30/80) - ventilation	0.120	50	450	1.600	D
C	15.0	fibreboard (MDF)	0.140	11	600	1.700	D
D	160.0	construction timber (60/..; e=*)	0.120	50	450	1.600	D
E	160.0	mineral wool [040; ≥ 16 ; $< 1000^\circ\text{C}$]	0.040	1	16	1.030	A1
F	15.0	gypsum fibre board	0.320	21	1000	1.100	A2
G		vapour barrier $sd \geq 1 \text{ m}$			1000		
H	40.0	spruce wood cross battens (a=400) or battens offset)	0.120	50	450	1.600	D
I		without insulation					
J	12.5	gypsum fibre board or	0.320	21	1000	1.100	A2
J	12.5	gypsum plaster board type DF	0.250	10	800	1.050	A2

Sustainability rating (per m²)

Database ecoinvent

O13_{kon} 21.7

Calculated by HFA

Details of sustainability rating

Database ecoinvent

Lifecycle (Phases)	GWP [kg CO ₂ -e.]	AP [kg SO ₂ -e.]	EP [kg PO ₄ -e.]	ODP [kg R11-e.]	POCP [kg Ethen-e.]	
A1 - A3		0.103	0.046	1,92E-6	0.020	

Lifecycle (Phases)	PERE [MJ]	PERM [MJ]	PERT [MJ]	PENRE [MJ]	PENRM [MJ]	PENRT [MJ]
A1 - A3	95.608	558.931	654.539	371.088	30.791	401.879