

External wall - awrhh03a-08

external wall, timber frame construction, ventilated, with dry lining, with cladding, other surface

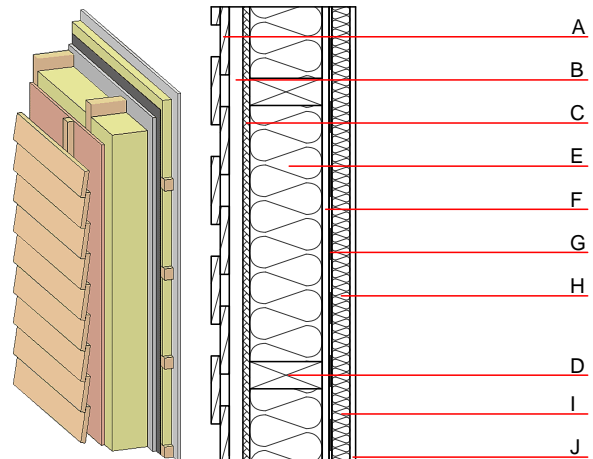
Performance rating

Fire protection performance
 REI from inside 60
 REI from outside 30
 maximum ceiling height = 3 m; maximum load $E_{d,fi} = 19,2 \text{ kN/m}$
 Classified by HFA

Thermal performance
 U 0.21 $\text{W}/(\text{m}^2\text{K})$
 Diffusion suitable
 Calculated by HFA

Acoustic performance
 $R_w (C;C_{tr})$ 50(-3;-10) dB
 $L_{n,w} (C_i)$
 Battens for the ventilation space screwed onto the structural timber together with vertical battens for the dry lining screwed directly onto the ledger beams will result in $R_w(C;Ctr)=43(-1;-5)$ dB
 Assessed by MA39

Mass per unit area m 50.30 kg/m^2
 Calculation based on CF



Note: e=625

Register of building materials used for this application, cross-section (from outside to inside, dimensions in mm)

	Thickness	Building material	Thermal performance				Reaction to fire EN
			λ	μ min – max	ρ	c	
A	24.0	larch wood external wall cladding	0.155	150	600	1.600	D
B	30.0	spruce wood battens offset (30/50; 30/80) - ventilation	0.120	50	450	1.600	D
C	15.0	fibreboard (MDF)	0.140	11	600	1.700	D
D	160.0	construction timber (60/...; e=*)	0.120	50	450	1.600	D
E	160.0	mineral wool [038; ≥33; ≥1000°C]	0.038	1	33	1.030	A1
F	15.0	gypsum fibre board	0.320	21	1000	1.100	A2
G		vapour barrier $s_d \geq 1 \text{ m}$			1000		
H	40.0	spruce wood cross battens (a=400) or battens offset)	0.120	50	450	1.600	D
I	40.0	mineral wool [038; ≥33; ≥1000°C] or air layer in type 02	0.038	1	33	1.030	A1
J	12.5	gypsum fibre board or	0.320	21	1000	1.100	A2
J	12.5	gypsum plaster board type DF	0.250	10	800	1.050	A2

Sustainability rating (per m^2)

Database ecoinvent

$OI3_{Kon}$ 29.9

Calculated by HFA

Details of sustainability rating

Database ecoinvent

Lifecycle (Phases)	GWP [kg CO ₂ -e.]	AP [kg SO ₂ -e.]	EP [kg PO ₄ -e.]	ODP [kg R11-e.]	POCP [kg Ethen-e.]	
A1 - A3		0.149	0.050	1,75E-6	0.052	

Lifecycle (Phases)	PERE [MJ]	PERM [MJ]	PERT [MJ]	PENRE [MJ]	PENRM [MJ]	PENRT [MJ]
A1 - A3	95.731	558.931	654.662	404.533	30.791	435.324