

External wall - awrhh06a-02

external wall, timber frame construction, ventilated, with dry lining, with cladding, other surface

Performance rating

Fire protection performance REI from inside 60
 REI from outside 30
 maximum ceiling height = 3 m; maximum load $E_{d,fi} = 19,2 \text{ kN/m}$
 Classified by HFA

Thermal performance U 0.23 $\text{W}/(\text{m}^2\text{K})$
 Diffusion suitable

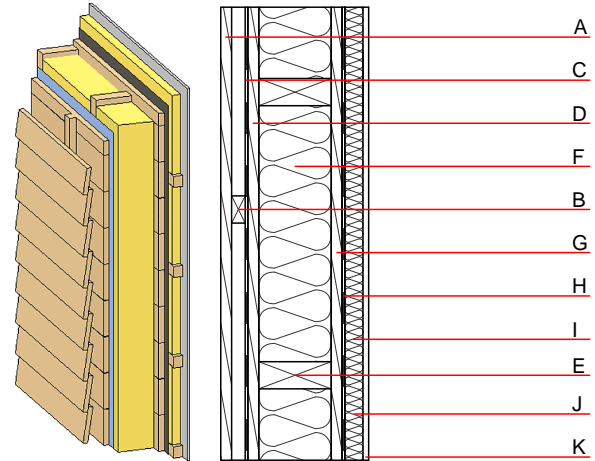
Calculated by HFA

Acoustic performance $R_w (C;C_{tr})$ 50(-3;-10) dB
 $L_{n,w} (C_i)$

Battens for the ventilation space screwed onto the structural timber together with vertical battens for the dry lining screwed directly onto the ledger beams will result in $R_w(C;Ctr)=43(-2;-5)$
 Assessed by MA39

Mass per unit area m 48.90 kg/m^2

Calculation based on gypsum plaster board type DF



Note: e=625; J=without insulation

Register of building materials used for this application, cross-section (from outside to inside, dimensions in mm)

	Thickness	Building material	Thermal performance				Reaction to fire EN
			λ	μ min – max	ρ	c	
A	24.0	larch wood external wall cladding	0.155	150	600	1.600	D
B	30.0	spruce wood battens offset (30/50; 30/80) - ventilation	0.120	50	450	1.600	D
C		wind barrier			1000		
D	25.0	planking spruce wood	0.120	50	450	1.600	D
E	160.0	construction timber (60/..; e=*)	0.120	50	450	1.600	D
F	160.0	mineral wool [040; ≥ 16 ; $< 1000^\circ\text{C}$]	0.040	1	16	1.030	A1
G	25.0	planking spruce wood	0.120	50	450	1.600	D
H		vapour barrier $s_d \geq 5\text{m}$			1000		
I	40.0	spruce wood cross battens (a=400) or battens offset	0.120	50	450	1.600	D
J		air layer	0.000	1	1	1.008	
K	12.5	gypsum plaster board type DF or	0.250	10	800	1.050	A2
K	12.5	gypsum fibre board	0.320	21	1000	1.100	A2

Sustainability rating (per m^2)

Database ecoinvent

$OI3_{kon}$ 15.2

Calculated by HFA

Details of sustainability rating

Database ecoinvent

Lifecycle (Phases)	GWP [kg CO ₂ -e.]	AP [kg SO ₂ -e.]	EP [kg PO ₄ -e.]	ODP [kg R11-e.]	POCP [kg Ethen-e.]	
A1 - A3		0.106	0.048	1,87E-6	0.007	

Lifecycle (Phases)	PERE [MJ]	PERM [MJ]	PERT [MJ]	PENRE [MJ]	PENRM [MJ]	PENRT [MJ]
A1 - A3	54.518	830.916	885.434	329.299	12.604	341.904