

External wall - awrhi06a-06

external wall, timber frame construction, ventilated, with dry lining, with cladding, other surface

Performance rating

Fire protection performance
 REI from inside 60
 REI from outside 30
 maximum ceiling height = 3 m; maximum load $E_{d,fi} = 19,2 \text{ kN/m}$
 Classified by HFA

Thermal performance
 U 0.13 W/(m²K)
 Diffusion suitable

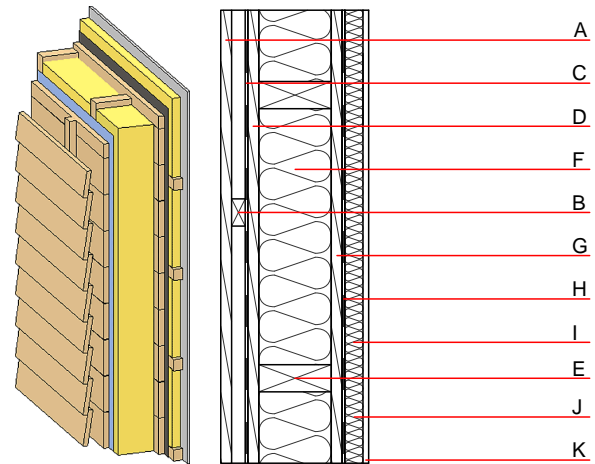
Calculated by HFA

Acoustic performance
 $R_w (C; C_{tr})$ 52(-3;-10) dB
 $L_{n,w} (C_i)$

Battens for the ventilation space screwed onto the structural timber together with vertical battens for the dry lining screwed directly onto the ledger beams will result in $R_w(C; C_{tr})=45(-2;-5)$
 Assessed by MA39

Mass per unit area m 57.50 kg/m²

Calculation based on gypsum plaster board type DF



Note: e=625

Register of building materials used for this application, cross-section (from outside to inside, dimensions in mm)

	Thickness	Building material	Thermal performance				Reaction to fire EN
			λ	μ min – max	ρ	c	
A	24.0	larch wood external wall cladding	0.155	150	600	1.600	D
B	30.0	spruce wood battens offset (30/50; 30/80) - ventilation	0.120	50	450	1.600	D
C		wind barrier			1000		
D	25.0	planking spruce wood	0.120	50	450	1.600	D
E	240.0	construction timber (60/..; e=*)	0.120	50	450	1.600	D
F	240.0	mineral wool [040; ≥ 16 ; <1000°C]	0.040	1	16	1.030	A1
G	25.0	planking spruce wood	0.120	50	450	1.600	D
H		vapour barrier $s_d \geq 5\text{m}$			1000		
I	80.0	spruce wood cross battens (a=400) or battens offset	0.120	50	450	1.600	D
J	80.0	mineral wool [040; ≥ 16 ; <1000°C]	0.040	1	16	1.030	A1
K	12.5	gypsum plaster board type DF or	0.250	10	800	1.050	A2
K	12.5	gypsum fibre board	0.320	21	1000	1.100	A2

Sustainability rating (per m²)

Database ecoinvent

Ol3_{Kon} 25.4

Calculated by HFA

Details of sustainability rating

Database ecoinvent

Lifecycle (Phases)	GWP [kg CO ₂ -e.]	AP [kg SO ₂ -e.]	EP [kg PO ₄ -e.]	ODP [kg R11-e.]	POCP [kg Ethen-e.]	
A1 - A3		0.152	0.069	2,63E-6	0.009	

Lifecycle (Phases)	PERE [MJ]	PERM [MJ]	PERT [MJ]	PENRE [MJ]	PENRM [MJ]	PENRT [MJ]
A1 - A3	64.114	943.331	1007.445	466.374	12.604	478.978