

External wall - awrhh07a-08

external wall, timber frame construction, ventilated, with dry lining, with cladding, other surface

Performance rating

Fire protection performance	REI from inside	60
	REI from outside	30
maximum ceiling height = 3 m; maximum load $E_{d,fi}$ = 19,2 kN/m		
Classified by HFA		

Thermal performance	U	0.19 W/(m ² K)
	Diffusion	suitable

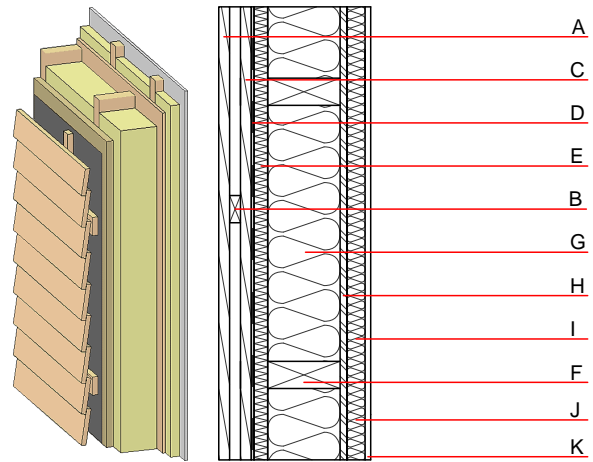
Calculated by HFA

Acoustic performance	R_w (C;C _{tr})	50(-3;-10) dB
	$L_{n,w}$ (C _i)	

Battens for the ventilation space screwed onto the structural timber together with vertical battens for the dry lining screwed directly onto the ledger beams will result in $R_w(C;C_{tr})=43(-1;-5)$ dB
Assessed by MA39

Mass per unit area	m	43.50 kg/m ²
--------------------	---	-------------------------

Calculation based on GF



Note: e=625

Register of building materials used for this application, cross-section (from outside to inside, dimensions in mm)

	Thickness	Building material	Thermal performance				Reaction to fire EN
			λ	μ min – max	ρ	c	
A	24.0	larch wood external wall cladding	0.155	150	600	1.600	D
B	24.0	spruce wood battens - ventilation	0.120	50	450	1.600	D
C	24.0	spruce wood cross battens	0.120	50	450	1.600	D
D		wind barrier			1000		
E	60.0	wood-fibre insulation board [045; 140]	0.045	2 - 5	140	2.100	E
F	160.0	construction timber (60/-; e=*)	0.120	50	450	1.600	D
G	160.0	mineral wool [038; ≥33; ≥1000°C]	0.038	1	33	1.030	A1
H	15.0	OSB (sealed with airtight tape)	0.130	200	600	1.700	D
I	40.0	spruce wood cross battens (a=400) or battens offset	0.120	50	450	1.600	D
J	40.0	mineral wool [038; ≥33; ≥1000°C]	0.038	1	33	1.030	A1
K	12.5	gypsum plaster board type DF or	0.250	10	800	1.050	A2
K	12.5	gypsum fibre board	0.320	21	1000	1.100	A2

Sustainability rating (per m²)

Database ecoinvent

013 _{Kon}	32.9
--------------------	------

Calculated by HFA

Details of sustainability rating

Database ecoinvent

Lifecycle (Phases)	GWP [kg CO ₂ -e.]	AP [kg SO ₂ -e.]	EP [kg PO ₄ -e.]	ODP [kg R11-e.]	POCP [kg Ethen-e.]	
A1 - A3		0.179	0.056	1,93E-6	0.035	

Lifecycle (Phases)	PERE [MJ]	PERM [MJ]	PERT [MJ]	PENRE [MJ]	PENRM [MJ]	PENRT [MJ]
A1 - A3	85.525	642.349	727.874	415.204	25.028	440.232