

## External wall - awrhi08a-07

external wall, timber frame construction, ventilated, with dry lining, with cladding, other surface

### Performance rating

**Fire protection performance**  
REI from inside 60  
REI from outside 30  
maximum ceiling height = 3 m; maximum load  $E_{d,fi}$  = 19,2 kN/m  
Classified by HFA

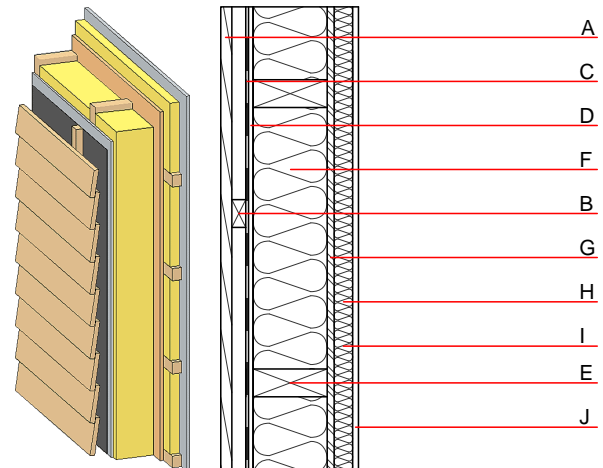
**Thermal performance**  
U 0.19 W/(m<sup>2</sup>K)  
Diffusion suitable

Calculated by HFA

**Acoustic performance**  
 $R_w$  (C;C<sub>tr</sub>) 51(-3;-10) dB  
 $L_{n,w}$  (C<sub>i</sub>)  
Battens for the ventilation space screwed onto the structural timber together with vertical battens for the dry lining screwed directly onto the ledger beams will result in  $R_w$ (C;C<sub>tr</sub>)=44(-1;-5) dB  
Assessed by MA39

**Mass per unit area** m 49.00 kg/m<sup>2</sup>

Calculation based on GF



Note: e=625

### Register of building materials used for this application, cross-section (from outside to inside, dimensions in mm)

	Thickness	Building material	Thermal performance				Reaction to fire EN
			$\lambda$	$\mu$ min – max	$\rho$	c	
A	24.0	larch wood external wall cladding	0.155	150	600	1.600	D
B	30.0	spruce wood battens offset (30/50; 30/80) - ventilation	0.120	50	450	1.600	D
C		wind barrier			1000		
D	12.5	gypsum fibre board	0.320	21	1000	1.100	A2
E	160.0	construction timber (60/...; e=*)	0.120	50	450	1.600	D
F	160.0	mineral wool [035; 50; <1000°C]	0.035	1	50	1.030	A1
G	15.0	OSB (sealed with airtight tape)	0.130	200	600	1.700	D
H	40.0	spruce wood cross battens (a=400) or battens offset	0.120	50	450	1.600	D
I	40.0	mineral wool [035; 50; <1000°C] or air layer in type 02	0.035	1	50	1.030	A1
J	12.5	gypsum fibre board or	0.320	21	1000	1.100	A2
J	12.5	gypsum plaster board type DF	0.250	10	800	1.050	A2

### Sustainability rating (per m<sup>2</sup>)

#### Database ecoinvent

O13<sub>Kon</sub> 46.8

Calculated by HFA

## Details of sustainability rating

### Database ecoinvent

Lifecycle (Phases)	GWP [kg CO <sub>2</sub> -e.]	AP [kg SO <sub>2</sub> -e.]	EP [kg PO <sub>4</sub> -e.]	ODP [kg R11-e.]	POCP [kg Ethen-e.]	
A1 - A3		0.205	0.092	3,77E-6	0.011	

Lifecycle (Phases)	PERE [MJ]	PERM [MJ]	PERT [MJ]	PENRE [MJ]	PENRM [MJ]	PENRT [MJ]
A1 - A3	103.438	566.554	669.993	663.325	18.986	682.311