

## External wall - awrho02a-04

external wall, timber frame construction, ventilated, without dry lining, with cladding, other surface

### Performance rating

Fire protection performance	REI from inside	60
	REI from outside	30

maximum ceiling height = 3 m; maximum load  $E_{d,fi} = 32,0 \text{ kN/m}$   
Classified by HFA

Thermal performance	U	0.24 $\text{W}/(\text{m}^2\text{K})$
	Diffusion	suitable

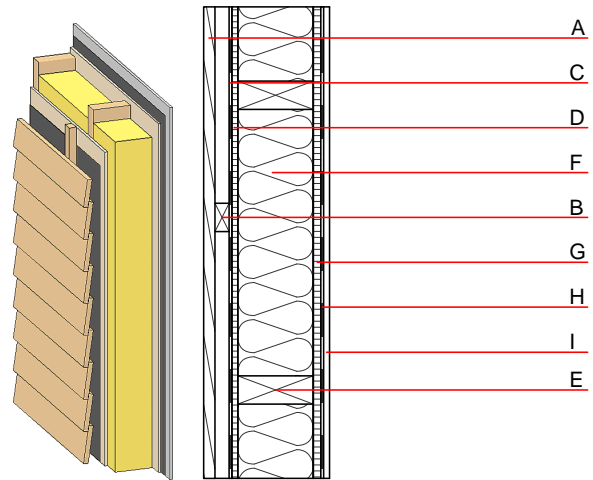
Calculated by HFA

Acoustic performance	$R_w (C; C_{tr})$	48(-2;-8) dB
	$L_{n,w} (C_i)$	

Battens for the ventilation space screwed onto the structural timber result in an  $R_w(C; C_{tr})=44(-1;-7)$  dB  
Assessed by MA39

Mass per unit area	m	42.00 $\text{kg}/\text{m}^2$
--------------------	---	------------------------------

Calculation based on GF



Note: e=625

### Register of building materials used for this application, cross-section (from outside to inside, dimensions in mm)

	Thickness	Building material	Thermal performance				Reaction to fire EN
			$\lambda$	$\mu \text{ min} - \text{max}$	$\rho$	c	
A	24.0	larch wood external wall cladding	0.155	150	600	1.600	D
B	30.0	spruce wood battens offset (30/50; 30/80) - ventilation	0.120	50	450	1.600	D
C		wind barrier			1000		
D	16.0	particleboard	0.130	50 - 100	700	1.700	D
E	160.0	construction timber (60/..; e=*)	0.120	50	450	1.600	D
F	160.0	mineral wool [035; 50; <1000°C]	0.035	1	50	1.030	A1
G	16.0	particleboard	0.130	50 - 100	700	1.700	D
H		vapour barrier $s_d \geq 5\text{m}$			1000		
I	12.5	gypsum plaster board type DF or	0.250	10	800	1.050	A2
I	12.5	gypsum fibre board	0.320	21	1000	1.100	A2

### Sustainability rating (per $\text{m}^2$ )

#### Database ecoinvent

013 <sub>Kon</sub>	43.0
--------------------	------

Calculated by HFA

## Details of sustainability rating

### Database ecoinvent

Lifecycle (Phases)	GWP [kg CO <sub>2</sub> -e.]	AP [kg SO <sub>2</sub> -e.]	EP [kg PO <sub>4</sub> -e.]	ODP [kg R11-e.]	POCP [kg Ethen-e.]	
A1 - A3		0.182	0.083	3,12E-6	0.034	

Lifecycle (Phases)	PERE [MJ]	PERM [MJ]	PERT [MJ]	PENRE [MJ]	PENRM [MJ]	PENRT [MJ]
A1 - A3	91.722	648.554	740.275	649.250	53.916	703.166