

External wall - awrho03a-05

external wall, timber frame construction, ventilated, without dry lining, with cladding, other surface

Performance rating

Fire protection performance	REI from inside	60
	REI from outside	30
maximum ceiling height = 3 m; maximum load $E_{d,fi} = 32,0 \text{ kN/m}$ Classified by HFA		

Thermal performance	U	0.26 $\text{W}/(\text{m}^2\text{K})$
	Diffusion	suitable

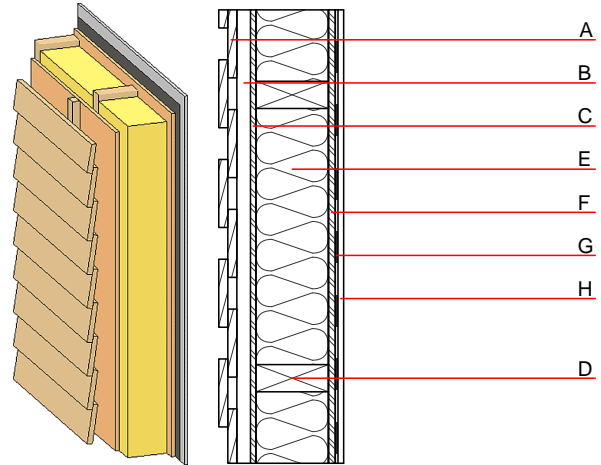
Calculated by HFA

Acoustic performance	$R_w (C; C_{tr})$	47(-2;-8) dB
	$L_{n,w} (C_i)$	

Battens for the ventilation space screwed onto the structural timber result in an $R_w(C; C_{tr})=43(-1;-7)$ dB
Assessed by MA39

Mass per unit area	m	40.10 kg/m^2
--------------------	---	------------------------------

Calculation based on gypsum plaster board type DF



Note: e=625

Register of building materials used for this application, cross-section (from outside to inside, dimensions in mm)

	Thickness	Building material	Thermal performance				Reaction to fire EN
			λ	$\mu \text{ min} - \text{max}$	ρ	c	
A	24.0	larch wood external wall cladding	0.155	150	600	1.600	D
B	30.0	spruce wood battens offset (30/50; 30/80) - ventilation	0.120	50	450	1.600	D
C	15.0	OSB	0.130	200	600	1.700	D
D	160.0	construction timber (60/-; e=*)	0.120	50	450	1.600	D
E	160.0	mineral wool [038; ≥ 33 ; $\geq 1000^\circ\text{C}$]	0.038	1	33	1.030	A1
F	15.0	OSB	0.130	200	600	1.700	D
G		vapour barrier $s_d \geq 10\text{m}$			1000		
H	12.5	gypsum plaster board type DF or	0.250	10	800	1.050	A2
H	12.5	gypsum fibre board	0.320	21	1000	1.100	A2

Sustainability rating (per m^2)

Database ecoinvent

OI3 _{Kon}	24.7
--------------------	------

Calculated by HFA

Details of sustainability rating

Database ecoinvent

Lifecycle (Phases)	GWP [kg CO ₂ -e.]	AP [kg SO ₂ -e.]	EP [kg PO ₄ -e.]	ODP [kg R11-e.]	POCP [kg Ethen-e.]	
A1 - A3		0.135	0.046	1,63E-6	0.048	

Lifecycle (Phases)	PERE [MJ]	PERM [MJ]	PERT [MJ]	PENRE [MJ]	PENRM [MJ]	PENRT [MJ]
A1 - A3	122.404	626.385	748.790	359.730	23.973	383.703