

External wall - awrhho04a-06

external wall, timber frame construction, ventilated, without dry lining, with cladding, other surface

Performance rating

Fire protection performance REI from inside 30
 REI from outside 30
 maximum ceiling height = 3 m; maximum load $E_{d,fi}$ = 19,2 kN/m
 Classified by HFA

Thermal performance U 0.27 W/(m²K)
 Diffusion suitable

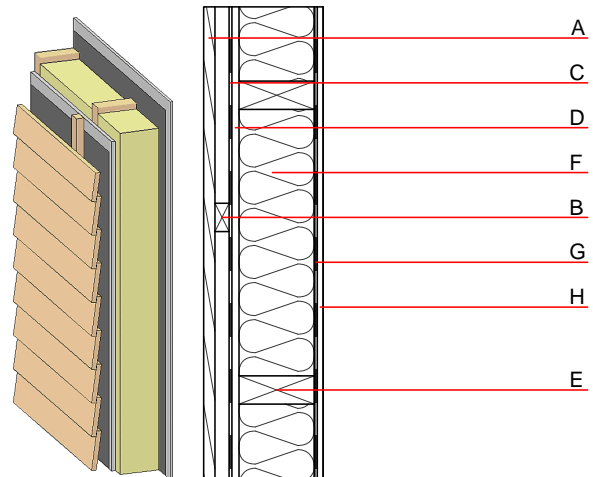
Calculated by HFA

Acoustic performance R_w (C;C_{tr}) 45(-2;-8) dB
 $L_{n,w}$ (C_i)

Battens for the ventilation space screwed onto the structural timber result in an $R_w(C;C_{tr})=41(-1;-7)$ dB
 Assessed by MA39

Mass per unit area m 41.00 kg/m²

Calculation based on GF



Note: e=625

Register of building materials used for this application, cross-section (from outside to inside, dimensions in mm)

	Thickness	Building material	Thermal performance				Reaction to fire EN
			λ	μ min – max	ρ	c	
A	24.0	larch wood external wall cladding	0.155	150	600	1.600	D
B	30.0	spruce wood battens offset (30/50; 30/80) - ventilation	0.120	50	450	1.600	D
C		wind barrier			1000		
D	12.5	gypsum fibre board	0.320	21	1000	1.100	A2
E	160.0	construction timber (60/...; e=*)	0.120	50	450	1.600	D
F	160.0	cellulose fibre [040; E]	0.040	1 - 2	55	2.000	E
G		vapour barrier sd≥ 2m			1000		
H	12.5	gypsum fibre board or	0.320	21	1000	1.100	A2
H	12.5	gypsum plaster board type DF	0.250	10	800	1.050	A2

Sustainability rating (per m²)

Database ecoinvent

013_{Kon} 14.2

Calculated by HFA

Details of sustainability rating

Database ecoinvent

Lifecycle (Phases)	GWP [kg CO ₂ -e.]	AP [kg SO ₂ -e.]	EP [kg PO ₄ -e.]	ODP [kg R11-e.]	POCP [kg Ethen-e.]	
A1 - A3		0.075	0.034	1,51E-6	0.015	

Lifecycle (Phases)	PERE [MJ]	PERM [MJ]	PERT [MJ]	PENRE [MJ]	PENRM [MJ]	PENRT [MJ]
A1 - A3	89.166	443.758	532.924	253.298	10.862	264.160