

External wall - awrhho05b-02

external wall, timber frame construction, ventilated, without dry lining, with cladding, other surface

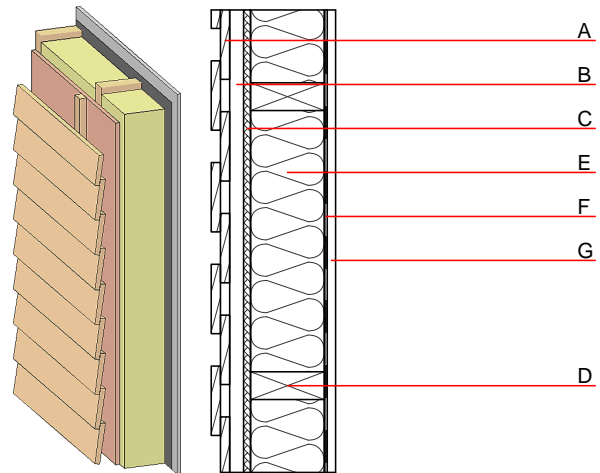
Performance rating

Fire protection performance REI from inside 60
 REI from outside 30
 maximum ceiling height = 3 m; maximum load $E_{d,fi} = 25,0 \text{ kN/m}$
 Classified by HFA

Thermal performance U 0.22 $\text{W}/(\text{m}^2\text{K})$
 Diffusion suitable
 Calculated by HFA

Acoustic performance $R_w (C;C_{tr})$ 46(-2;-8) dB
 $L_{n,w} (C_i)$
 Battens for the ventilation space screwed onto the structural timber result in an $R_w(C;C_{tr})=42(-1;-7)$ dB
 Assessed by MA39

Mass per unit area m 31.60 kg/m^2
 Calculation based on GF



Note: e=625

Register of building materials used for this application, cross-section (from outside to inside, dimensions in mm)

| | Thickness | Building material | Thermal performance | | | | Reaction to fire EN |
|---|-----------|---|---------------------|-----------------|--------|-------|---------------------|
| | | | λ | μ min – max | ρ | c | |
| A | 24.0 | larch wood external wall cladding | 0.155 | 150 | 600 | 1.600 | D |
| B | 30.0 | spruce wood battens offset (30/50; 30/80) - ventilation | 0.120 | 50 | 450 | 1.600 | D |
| C | 15.0 | fibreboard (MDF) | 0.140 | 11 | 600 | 1.700 | D |
| D | 200.0 | construction timber (60/...; e=*) | 0.120 | 50 | 450 | 1.600 | D |
| E | 200.0 | mineral wool [040; ≥ 16 ; $< 1000^\circ\text{C}$] | 0.040 | 1 | 16 | 1.030 | A1 |
| F | | vapour barrier $s_{d} \geq 1 \text{ m}$ | | | | 1000 | |
| G | 18.0 | gypsum fibre board or | 0.320 | 21 | 1000 | 1.100 | A2 |
| G | 18.0 | gypsum plaster board type DF | 0.250 | 10 | 800 | 1.050 | A2 |

Sustainability rating (per m^2)

Database ecoinvent

OI_{kon} 22.4

Calculated by HFA

Details of sustainability rating

Database ecoinvent

| Lifecycle (Phases) | GWP [kg CO ₂ -e.] | AP [kg SO ₂ -e.] | EP [kg PO ₄ -e.] | ODP [kg R11-e.] | POCP [kg Ethen-e.] | |
|-----------------------|---------------------------------|--------------------------------|--------------------------------|--------------------|-----------------------|--|
| A1 - A3 | | 0.109 | 0.049 | 1,90E-6 | 0.020 | |

| Lifecycle (Phases) | PERE [MJ] | PERM [MJ] | PERT [MJ] | PENRE [MJ] | PENRM [MJ] | PENRT [MJ] |
|-----------------------|--------------|--------------|--------------|---------------|---------------|---------------|
| A1 - A3 | 107.510 | 541.243 | 648.752 | 370.862 | 22.510 | 393.371 |