

External wall - awrhho07a-08

external wall, timber frame construction, ventilated, without dry lining, with cladding, other surface

Performance rating

Fire protection performance REI from inside 60
REI from outside 30
maximum ceiling height = 3 m; maximum load $E_{d,fi} = 32,0 \text{ kN/m}$
Classified by MA39
Classified by HFA

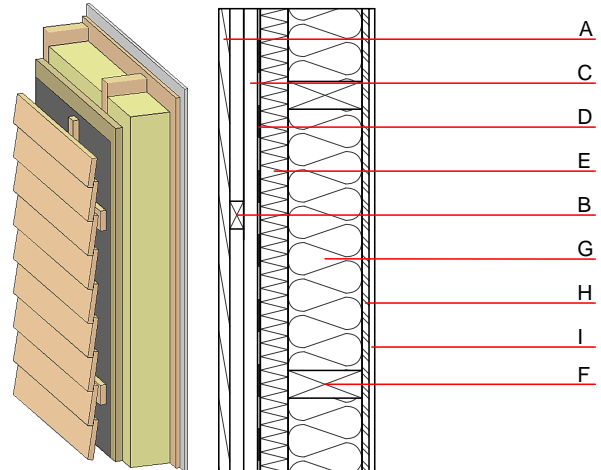
Thermal performance U 0.24 W/(m²K)
Diffusion suitable

Acoustic performance $R_w (C; C_{tr})$ 46(-2;-8) dB
 $L_{n,w} (C_i)$

Assessed by Ma39

Mass per unit area m 41.60 kg/m²

Calculation based on GF



Note: According to OIB-RL 2 (Austria) is for ventilated and insulated facades (from building class 2) an insulation material with minimum Euroclass D required.

Register of building materials used for this application, cross-section (from outside to inside, dimensions in mm)

	Thickness	Building material	Thermal performance				Reaction to fire EN
			λ	$\mu \text{ min} - \text{max}$	ρ	c	
A	24.0	larch wood external wall cladding	0.155	150	600	1.600	D
B	30.0	spruce wood battens - ventilation	0.120	50	450	1.600	D
C	30.0	spruce wood cross battens	0.120	50	450	1.600	D
D		wind barrier			1000		
E	60.0	wood-fibre insulation board [045; 140]	0.045	2 - 5	140	2.100	E
F	160.0	construction timber (60/...; e=400)	0.120	50	450	1.600	D
G	160.0	mineral wool [040; ≥ 16 ; $< 1000^\circ\text{C}$]	0.040	1	16	1.030	A1
H	15.0	OSB (sealed with airtight tape)	0.130	200	600	1.700	D
I	12.5	gypsum plaster board type DF or	0.250	10	800	1.050	A2
I	12.5	gypsum fibre board	0.320	21	1000	1.100	A2

Sustainability rating (per m²)

Database ecoinvent

OI3_{Kon} 24.9

Calculated by HFA

Details of sustainability rating

Database ecoinvent

Lifecycle (Phases)	GWP [kg CO ₂ -e.]	AP [kg SO ₂ -e.]	EP [kg PO ₄ -e.]	ODP [kg R11-e.]	POCP [kg Ethen-e.]	
A1 - A3		0.127	0.058	2,32E-6	0.026	

Lifecycle (Phases)	PERE [MJ]	PERM [MJ]	PERT [MJ]	PENRE [MJ]	PENRM [MJ]	PENRT [MJ]
A1 - A3	131.677	727.504	859.181	432.416	29.328	461.744