

## External wall - awrhho08a-02

external wall, timber frame construction, ventilated, without dry lining, with cladding, other surface

### Performance rating

<b>Fire protection performance</b>	REI from inside	60
	REI from outside	30

maximum ceiling height = 3 m; maximum load  $E_{d,fi} = 32,0 \text{ kN/m}$   
 Classified by HFA

<b>Thermal performance</b>	U	0.22 $\text{W}/(\text{m}^2\text{K})$
	Diffusion	suitable

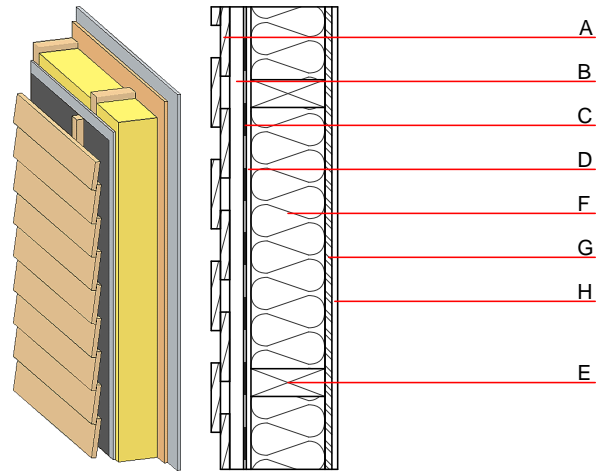
Calculated by HFA

<b>Acoustic performance</b>	$R_w (C;C_{tr})$	48(-2;-8) dB
	$L_{n,w} (C_i)$	

Battens for the ventilation space screwed onto the structural timber result in an  $R_w(C;C_{tr})=44(-1;-7)$  dB  
 Assessed by MA39

<b>Mass per unit area</b>	m	47.40 $\text{kg}/\text{m}^2$
---------------------------	---	------------------------------

Calculation based on GF



Note: e=625

### Register of building materials used for this application, cross-section (from outside to inside, dimensions in mm)

	Thickness	Building material	Thermal performance				Reaction to fire EN
			$\lambda$	$\mu$ min - max	$\rho$	c	
A	24.0	larch wood external wall cladding	0.155	150	600	1.600	D
B	30.0	spruce wood battens offset (30/50; 30/80) - ventilation	0.120	50	450	1.600	D
C		wind barrier			1000		
D	12.5	gypsum fibre board	0.320	21	1000	1.100	A2
E	200.0	construction timber (60/..; e=*)	0.120	50	450	1.600	D
F	200.0	mineral wool [040; $\geq 16$ ; $< 1000^\circ\text{C}$ ]	0.040	1	16	1.030	A1
G	15.0	OSB (sealed with airtight tape)	0.130	200	600	1.700	D
H	12.5	gypsum fibre board or	0.320	21	1000	1.100	A2
H	12.5	gypsum plaster board type DF	0.250	10	800	1.050	A2

### Sustainability rating (per $\text{m}^2$ )

#### Database ecoinvent

$OI3_{kon}$  23.6

Calculated by HFA

**Details of sustainability rating**

Database ecoinvent

Lifecycle (Phases)	GWP [kg CO <sub>2</sub> -e.]	AP [kg SO <sub>2</sub> -e.]	EP [kg PO <sub>4</sub> -e.]	ODP [kg R11-e.]	POCP [kg Ethen-e.]	
A1 - A3		0.113	0.052	2,20E-6	0.023	

Lifecycle (Phases)	PERE [MJ]	PERM [MJ]	PERT [MJ]	PENRE [MJ]	PENRM [MJ]	PENRT [MJ]
A1 - A3	110.789	540.620	651.410	389.617	17.244	406.861