

External wall - awrhho09a-07

external wall, timber frame construction, ventilated, without dry lining, with cladding, wooden surface

Performance rating

Fire protection performance
 REI from inside 30
 REI from outside 30
 maximum ceiling height = 3 m; maximum load $E_{d,fi} = 32 \text{ kN/m}$
 Classified by HFA

Thermal performance
 U 0.17 W/(m²K)
 Diffusion suitable

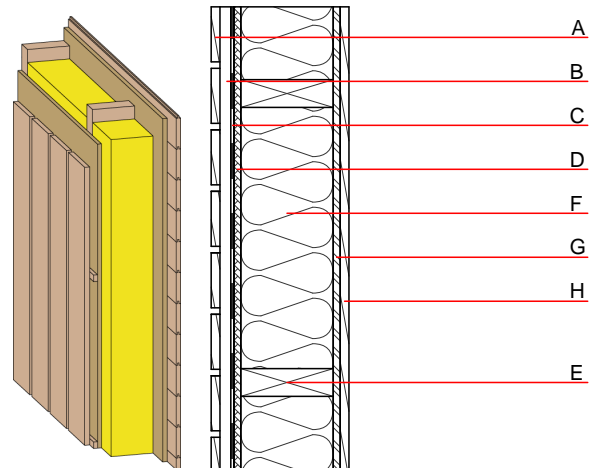
Calculated by HFA

Acoustic performance
 $R_w (C; C_{tr})$ 44(-2;-6) dB
 $L_{n,w} (C_i)$

with closed wooden facade R_w von 47 (-2; -8)

Assessed by TGM

Mass per unit area m 62.60 kg/m²



Register of building materials used for this application, cross-section (from outside to inside, dimensions in mm)

	Thickness	Building material	Thermal performance				Reaction to fire EN
			λ	$\mu \text{ min} - \text{max}$	ρ	c	
A	19.0	larch wood external wall cladding (open) vertical	0.155	150	600	1.600	D
B	30.0	larch wood - cross battens (30/50; 30/80) - ventilation	0.155	150	600	1.600	D
C		wind barrier			1000		
D	15.0	fibreboard (MDF)	0.140	11	600	1.700	D
E	240.0	construction timber (60/...; e=625)	0.120	50	450	1.600	D
F	240.0	Wood fibre insulation [039; 50]	0.039	1 - 2	50	2.100	E
G	15.0	OSB	0.130	200	600	1.700	D
H	19.0	planking tongue and groove	0.120	50	450	1.600	D

Sustainability rating (per m²)

Database ecoinvent

OI3_{Kon} 20.5

Calculated by IBO

Details of sustainability rating

Database ecoinvent

Lifecycle (Phases)	GWP [kg CO ₂ -e.]	AP [kg SO ₂ -e.]	EP [kg PO ₄ -e.]	ODP [kg R11-e.]	POCP [kg Ethen-e.]	
A1 - A3		0.125	0.056	1,97E-6	0.028	

Lifecycle (Phases)	PERE [MJ]	PERM [MJ]	PERT [MJ]	PENRE [MJ]	PENRM [MJ]	PENRT [MJ]
A1 - A3	162.197	1021.728	1183.925	419.148	55.693	474.841