

External wall - awrohi02a-08

external wall, timber frame construction, not ventilated, with dry lining, with cladding, other surface

Performance rating

Fire protection performance
 REI from inside 60
 REI from outside 30
 maximum ceiling height = 3 m; maximum load $E_{d,fi} = 19,2 \text{ kN/m}$
 Classified by HFA

Thermal performance
 U 0.17 W/(m²K)
 Diffusion suitable

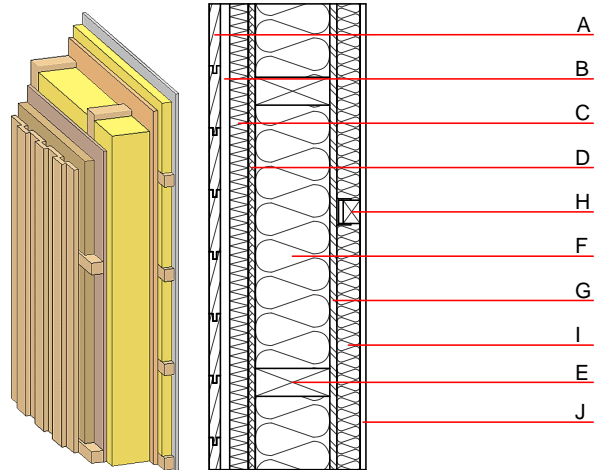
Calculated by HFA

Acoustic performance
 $R_w (C; C_{tr})$ 50(-3;-9) dB
 $L_{n,w} (C_i)$

Vertical battens for the dry lining screwed onto the ledger beams lead to an $R_w(C; C_{tr})=47(-1;-5) \text{ dB}$
 Assessed by MA39

Mass per unit area m 67.60 kg/m²

Calculation based on GF



Note: e=625

Register of building materials used for this application, cross-section (from outside to inside, dimensions in mm)

	Thickness	Building material	Thermal performance				Reaction to fire EN
			λ	$\mu \text{ min} - \text{max}$	ρ	c	
A	24.0	larch wood external wall cladding	0.155	150	600	1.600	D
B	50.0	spruce wood cross battens	0.120	50	450	1.600	D
C	40.0	softboard [045; 250] - rigid underlay	0.045	5	250	2.100	E
D	15.0	fibreboard (MDF)	0.140	11	600	1.700	D
E	160.0	construction timber (60/...; e=*)	0.120	50	450	1.600	D
F	160.0	mineral wool [038; ≥33; ≥1000°C]	0.038	1	33	1.030	A1
G	15.0	OSB (sealed with airtight tape)	0.130	200	600	1.700	D
H	40.0	spruce wood cross battens (a=400) or battens offset	0.120	50	450	1.600	D
I	40.0	mineral wool [038; ≥33; ≥1000°C] or air layer in type 02	0.038	1	33	1.030	A1
J	12.5	gypsum fibre board or	0.320	21	1000	1.100	A2
J	12.5	gypsum plaster board type DF	0.250	10	800	1.050	A2

Sustainability rating (per m²)

Database ecoinvent

013_{Kon} 36.2

Calculated by HFA

Details of sustainability rating

Database ecoinvent

Lifecycle (Phases)	GWP [kg CO ₂ -e.]	AP [kg SO ₂ -e.]	EP [kg PO ₄ -e.]	ODP [kg R11-e.]	POCP [kg Ethen-e.]	
A1 - A3		0.190	0.068	2,31E-6	0.060	

Lifecycle (Phases)	PERE [MJ]	PERM [MJ]	PERT [MJ]	PENRE [MJ]	PENRM [MJ]	PENRT [MJ]
A1 - A3	140.821	873.358	1014.179	528.291	42.896	571.187