

External wall - awroho01a-04

external wall, timber frame construction, not ventilated, without dry lining, with cladding, other surface

Performance rating

Fire protection performance	REI from inside	60
	REI from outside	30
maximum ceiling height = 3 m; maximum load $E_{d,fi} = 32,0 \text{ kN/m}$ Classified by HFA		

Thermal performance	U	0.20 W/(m ² K)
	Diffusion	suitable

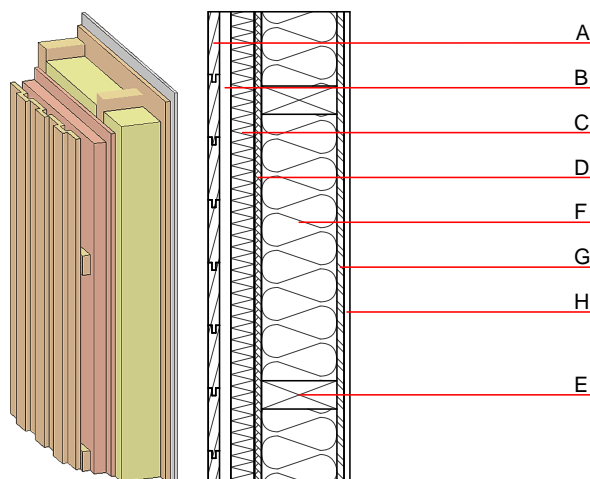
Calculated by HFA

Acoustic performance	$R_w (C; C_{tr})$	51 (-2;-7) dB
	$L_{n,w} (C_i)$	

Assessed by MA39

Mass per unit area	m	75.70 kg/m ²
--------------------	---	-------------------------

Calculation based on GF



Note: e=625

Register of building materials used for this application, cross-section (from outside to inside, dimensions in mm)

	Thickness	Building material	Thermal performance				Reaction to fire	
			λ	$\mu \text{ min} - \text{max}$	ρ	c	EN	
A	24.0	larch wood external wall cladding	0.155	150	600	1.600	D	
B	24.0	spruce wood cross battens	0.120	50	450	1.600	D	
C	50.0	wood wool composite boards	0.090	2 - 5	370	2.000	B	
D	15.0	fibreboard (MDF)	0.140	11	600	1.700	D	
E	160.0	construction timber (60/-; e=*)	0.120	50	450	1.600	D	
F	160.0	mineral wool [035; 50; <1000°C]	0.035	1	50	1.030	A1	
G	15.0	OSB (sealed with airtight tape)	0.130	200	600	1.700	D	
H	12.5	gypsum fibre board or	0.320	21	1000	1.100	A2	
H	12.5	gypsum plaster board type DF	0.250	10	800	1.050	A2	

Sustainability rating (per m²)

Database ecoinvent

013_{Kon} 43.4

Calculated by HFA

Details of sustainability rating

Database ecoinvent

Lifecycle (Phases)	GWP [kg CO ₂ -e.]	AP [kg SO ₂ -e.]	EP [kg PO ₄ -e.]	ODP [kg R11-e.]	POCP [kg Ethen-e.]	
A1 - A3		0.196	0.085	3,48E-6	0.032	

Lifecycle (Phases)	PERE [MJ]	PERM [MJ]	PERT [MJ]	PENRE [MJ]	PENRM [MJ]	PENRT [MJ]
A1 - A3	133.281	752.424	885.705	653.739	28.891	682.630