

## External wall - awroho02a-00

external wall, timber frame construction, not ventilated, without dry lining, with cladding, other surface

### Performance rating

**Fire protection performance** REI from inside 60  
 REI from outside 30  
 maximum ceiling height = 3 m; maximum load  $E_{d,fi} = 32,0 \text{ kN/m}$   
 Classified by HFA

**Thermal performance** U 0.20  $\text{W}/(\text{m}^2\text{K})$   
 Diffusion suitable

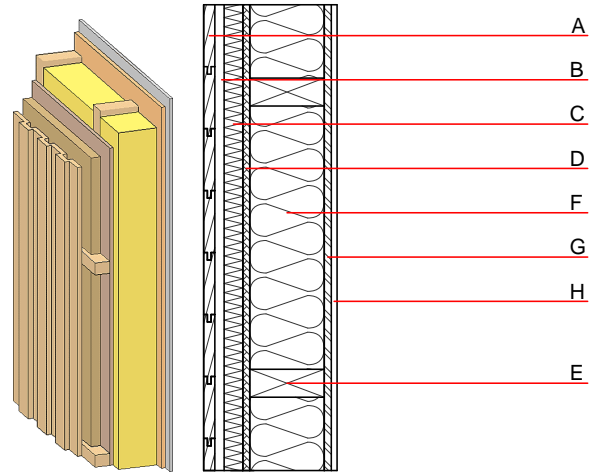
Calculated by HFA

**Acoustic performance**  $R_w (C; C_{tr})$  50(-2;-7) dB  
 $L_{n,w} (C_i)$

Assessed by MA39

**Mass per unit area** m 61.50  $\text{kg}/\text{m}^2$

Calculation based on GF



Note: e=625

### Register of building materials used for this application, cross-section (from outside to inside, dimensions in mm)

	Thickness	Building material	Thermal performance				Reaction to fire EN
			$\lambda$	$\mu$ min – max	$\rho$	c	
A	24.0	larch wood external wall cladding	0.155	150	600	1.600	D
B	50.0	spruce wood cross battens	0.120	50	450	1.600	D
C	40.0	softboard [045; 250] - rigid underlay	0.045	5	250	2.100	E
D	15.0	fibreboard (MDF)	0.140	11	600	1.700	D
E	160.0	construction timber (60/.; e=*)	0.120	50	450	1.600	D
F	160.0	mineral wool [040; $\geq 16$ ; $< 1000^\circ\text{C}$ ]	0.040	1	16	1.030	A1
G	15.0	OSB (sealed with airtight tape)	0.130	200	600	1.700	D
H	12.5	gypsum fibre board or	0.320	21	1000	1.100	A2
H	12.5	gypsum plaster board type DF	0.250	10	800	1.050	A2

### Sustainability rating (per $\text{m}^2$ )

#### Database ecoinvent

$OI3_{kon}$  28.1

Calculated by HFA

**Details of sustainability rating**

Database ecoinvent

Lifecycle (Phases)	GWP [kg CO <sub>2</sub> -e.]	AP [kg SO <sub>2</sub> -e.]	EP [kg PO <sub>4</sub> -e.]	ODP [kg R11-e.]	POCP [kg Ethen-e.]	
A1 - A3		0.142	0.063	2,45E-6	0.026	

Lifecycle (Phases)	PERE [MJ]	PERM [MJ]	PERT [MJ]	PENRE [MJ]	PENRM [MJ]	PENRT [MJ]
A1 - A3	133.300	824.224	957.524	487.676	42.896	530.572