

External wall - awroho03a-08

external wall, timber frame construction, not ventilated, without dry lining, with cladding, other surface

Performance rating

Fire protection performance	REI from inside	60
	REI from outside	30
maximum ceiling height = 3 m; maximum load $E_{d,fi} = 32,0 \text{ kN/m}$ Classified by HFA		

Thermal performance	U	0.23 W/(m ² K)
	Diffusion	suitable

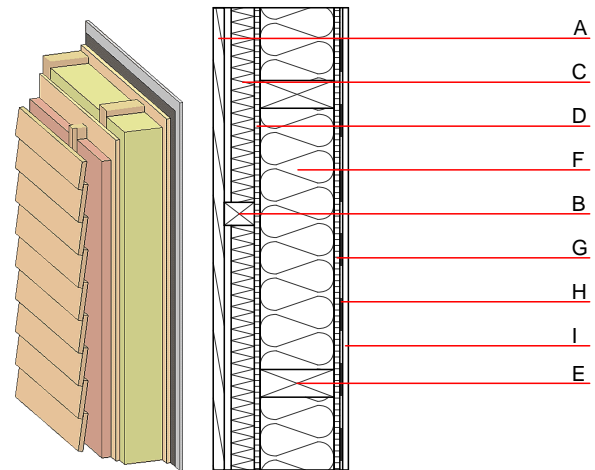
Calculated by HFA

Acoustic performance	$R_w (C; C_{tr})$	50(-2;-7) dB
	$L_{n,w} (C_i)$	

Vertical external battens screwed onto the ledger beams lead to an $R_w(C;C_{tr})=46(-1;-5) \text{ dB}$
Assessed by MA39

Mass per unit area	m	71.20 kg/m ²
--------------------	---	-------------------------

Calculation based on GF



Note: e=400

Register of building materials used for this application, cross-section (from outside to inside, dimensions in mm)

	Thickness	Building material	Thermal performance				Reaction to fire EN
			λ	$\mu \text{ min - max}$	ρ	c	
A	24.0	larch wood external wall cladding	0.155	150	600	1.600	D
B	65.0	spruce wood cross battens	0.120	50	450	1.600	D
C	50.0	wood wool composite boards	0.090	2 - 5	370	2.000	B
D	16.0	particleboard	0.130	50 - 100	700	1.700	D
E	160.0	construction timber (60/...; e=*)	0.120	50	450	1.600	D
F	160.0	mineral wool [040; ≥16; <1000°C]	0.040	1	16	1.030	A1
G	12.0	particleboard	0.130	50 - 100	700	1.700	D
H		vapour barrier $s_d \geq 10 \text{ m}$			1000		
I	12.5	gypsum fibre board or	0.320	21	1000	1.100	A2
I	12.5	gypsum plaster board type DF	0.250	10	800	1.050	A2

Sustainability rating (per m²)

Database ecoinvent

013 _{Kon}	25.0
--------------------	------

Calculated by HFA

Details of sustainability rating

Database ecoinvent

Lifecycle (Phases)	GWP [kg CO ₂ -e.]	AP [kg SO ₂ -e.]	EP [kg PO ₄ -e.]	ODP [kg R11-e.]	POCP [kg Ethen-e.]	
A1 - A3		0.121	0.052	2,22E-6	0.030	
Lifecycle (Phases)	PERE [MJ]	PERM [MJ]	PERT [MJ]	PENRE [MJ]	PENRM [MJ]	PENRT [MJ]
A1 - A3	105.731	800.350	906.081	472.926	41.362	514.288