

## External wall - awropi02b-03

external wall, timber frame construction, not ventilated, with dry lining, with rendering, other surface

### Performance rating

Fire protection performance	REI from inside	60
	REI from outside	60
maximum ceiling height = 3 m; maximum load $E_{d,fi}$ = 50,0 kN/m		
Classified by HFA		

Thermal performance	U	0.15 W/(m <sup>2</sup> K)
	Diffusion	suitable

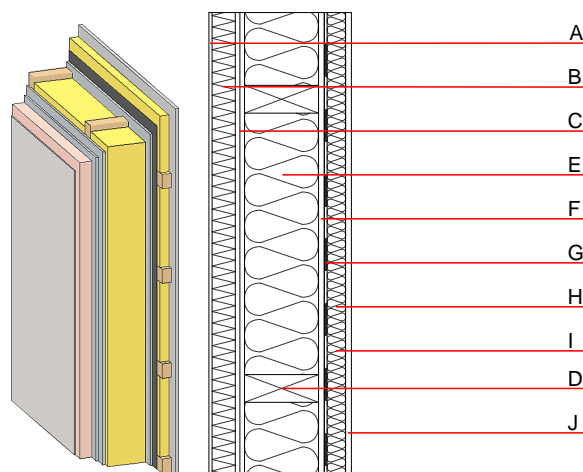
Calculated by HFA

Acoustic performance	$R_w$ (C;C <sub>tr</sub> )	48(-2;-5) dB
	$L_{n,w}$ (C <sub>i</sub> )	

Vertical battens for the dry lining screwed onto the ledger beams lead to an  $R_w(C;C_{tr})=45(-1;-5)$  dB  
Assessed by MA39

Mass per unit area	m	65.80 kg/m <sup>2</sup>
--------------------	---	-------------------------

Calculation based on GF



Note: e=625

### Register of building materials used for this application, cross-section (from outside to inside, dimensions in mm)

	Thickness	Building material	Thermal performance				Reaction to fire EN
			$\lambda$	$\mu$ min – max	$\rho$	c	
A	4.0	plaster	1.000	10 - 35	2000	1.130	A1
B	50.0	Polystyrene EPS-F [0,040]	0.040	20 - 50	17	1.450	E
C	25.0	gypsum fibre board (2x10 mm)	0.320	21	1000	1.100	A2
D	200.0	construction timber (60/...; e=*)	0.120	50	450	1.600	D
E	200.0	mineral wool [040; ≥16; <1000°C]	0.040	1	16	1.030	A1
F	12.5	gypsum fibre board	0.320	21	1000	1.100	A2
G		vapour barrier sd≥ 13m			1000		
H	40.0	spruce wood cross battens (a=400) or battens offset)	0.120	50	450	1.600	D
I	40.0	mineral wool [040; ≥16; <1000°C]	0.040	1	16	1.030	A1
J	12.5	gypsum plaster board type DF or	0.250	10	800	1.050	A2
J	12.5	gypsum fibre board	0.320	21	1000	1.100	A2

### Sustainability rating (per m<sup>2</sup>)

#### Database ecoinvent

013<sub>Kon</sub> 33.3

Calculated by HFA

## Details of sustainability rating

### Database ecoinvent

Lifecycle (Phases)	GWP [kg CO <sub>2</sub> -e.]	AP [kg SO <sub>2</sub> -e.]	EP [kg PO <sub>4</sub> -e.]	ODP [kg R11-e.]	POCP [kg Ethen-e.]	
A1 - A3		0.118	0.051	2,68E-6	0.023	
Lifecycle (Phases)	PERE [MJ]	PERM [MJ]	PERT [MJ]	PENRE [MJ]	PENRM [MJ]	PENRT [MJ]
A1 - A3	53.397	198.174	251.571	459.027	36.048	495.075