

External wall - awropi02b-08

external wall, timber frame construction, not ventilated, with dry lining, with rendering, other surface

Performance rating

Fire protection performance REI from inside 90
REI from outside 90
maximum ceiling height = 3 m; maximum load $E_{d,fi} = 50,0 \text{ kN/m}$
Classified by HFA

Thermal performance U 0.17 W/(m²K)
Diffusion suitable

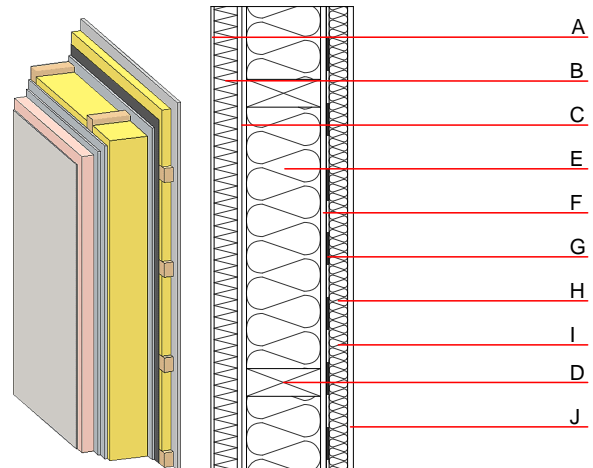
Calculated by HFA

Acoustic performance $R_w (C; C_{tr})$ 47(-2;-5) dB
 $L_{n,w} (C_i)$

Vertical battens for the dry lining screwed onto the ledger beams lead to an $R_w(C; C_{tr})=44(-1;-5) \text{ dB}$
Assessed by MA39

Mass per unit area m 66.40 kg/m²

Calculation based on GF



Note: e=625

Register of building materials used for this application, cross-section (from outside to inside, dimensions in mm)

	Thickness	Building material	Thermal performance				Reaction to fire EN
			λ	$\mu \text{ min} - \text{max}$	ρ	c	
A	4.0	plaster	1.000	10 - 35	2000	1.130	A1
B	50.0	Polystyrene EPS-F [0,040]	0.040	20 - 50	17	1.450	E
C	25.0	gypsum fibre board (2x10 mm)	0.320	21	1000	1.100	A2
D	160.0	construction timber (60/-; e=*)	0.120	50	450	1.600	D
E	160.0	mineral wool [038; ≥33; ≥1000°C]	0.038	1	33	1.030	A1
F	12.5	gypsum fibre board	0.320	21	1000	1.100	A2
G		vapour barrier sd≥ 13m			1000		
H	40.0	spruce wood cross battens (a=400) or battens offset	0.120	50	450	1.600	D
I	40.0	mineral wool [038; ≥33; ≥1000°C]	0.038	1	33	1.030	A1
J	12.5	gypsum plaster board type DF or	0.250	10	800	1.050	A2
J	12.5	gypsum fibre board	0.320	21	1000	1.100	A2

Sustainability rating (per m²)

Database ecoinvent

OI3_{Kon} 36.5

Calculated by HFA

Details of sustainability rating

Database ecoinvent

Lifecycle (Phases)	GWP [kg CO ₂ -e.]	AP [kg SO ₂ -e.]	EP [kg PO ₄ -e.]	ODP [kg R11-e.]	POCP [kg Ethen-e.]	
A1 - A3		0.142	0.045	2,14E-6	0.052	
Lifecycle (Phases)	PERE [MJ]	PERM [MJ]	PERT [MJ]	PENRE [MJ]	PENRM [MJ]	PENRT [MJ]
A1 - A3	45.230	166.728	211.958	428.204	36.048	464.252