

### External wall - awropi03a-11

external wall, timber frame construction, not ventilated, with dry lining, with rendering, other surface

#### Performance rating

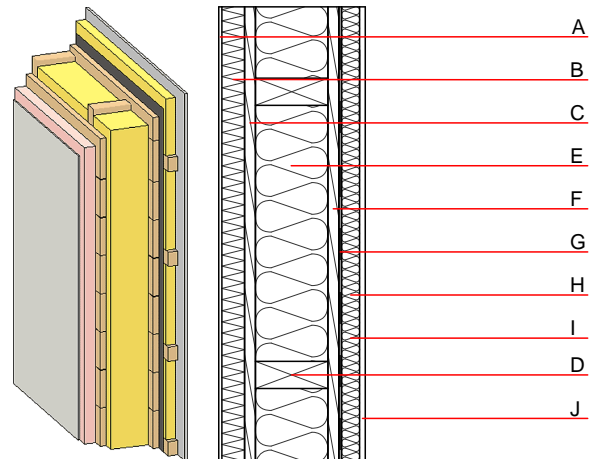
**Fire protection performance** REI from inside 60  
 REI from outside 30  
 maximum ceiling height = 3 m; maximum load  $E_{d,fi} = 19,2 \text{ kN/m}$   
 Classified by HFA

**Thermal performance** U 0.20  $\text{W}/(\text{m}^2\text{K})$   
 Diffusion suitable  
 Calculated by HFA

**Acoustic performance**  $R_w (C;C_{tr})$  45(-3;-6) dB  
 $L_{n,w} (C_i)$   
 vertical battens for the dry lining screwed onto the structural timber lead to an  $R_w(C;C_{tr})=42(-1;-5)$  dB  
 Assessed by MA39

**Mass per unit area** m 50.50  $\text{kg}/\text{m}^2$

Calculation based on gypsum plaster board type DF



Note: e=400

#### Register of building materials used for this application, cross-section (from outside to inside, dimensions in mm)

	Thickness	Building material	Thermal performance				Reaction to fire EN
			$\lambda$	$\mu$ min - max	$\rho$	c	
A	4.0	plaster	1.000	10 - 35	2000	1.130	A1
B	50.0	Polystyrene EPS-F [0,040]	0.040	20 - 50	17	1.450	E
C	25.0	planking spruce wood	0.120	50	450	1.600	D
D	160.0	construction timber (60/...; e=*)	0.120	50	450	1.600	D
E	160.0	mineral wool [040; $\geq 16$ ; $< 1000^\circ\text{C}$ ]	0.040	1	16	1.030	A1
F	25.0	planking spruce wood	0.120	50	450	1.600	D
G		vapour barrier $s_d \geq 16\text{m}$				1000	
H	40.0	spruce wood cross battens (a=400) or battens offset)	0.120	50	450	1.600	D
I	40.0	mineral wool [040; $\geq 16$ ; $< 1000^\circ\text{C}$ ] or air layer in type 02	0.040	1	16	1.030	A1
J	12.5	gypsum plaster board type DF or	0.250	10	800	1.050	A2
J	12.5	gypsum fibre board	0.320	21	1000	1.100	A2

#### Sustainability rating (per $\text{m}^2$ )

##### Database ecoinvent

$OI_{3kon}$  22.5

Calculated by HFA

**Details of sustainability rating**

Database ecoinvent

Lifecycle (Phases)	GWP [kg CO <sub>2</sub> -e.]	AP [kg SO <sub>2</sub> -e.]	EP [kg PO <sub>4</sub> -e.]	ODP [kg R11-e.]	POCP [kg Ethen-e.]	
A1 - A3		0.116	0.048	2,04E-6	0.031	

Lifecycle (Phases)	PERE [MJ]	PERM [MJ]	PERT [MJ]	PENRE [MJ]	PENRM [MJ]	PENRT [MJ]
A1 - A3	114.437	646.931	761.368	377.994	36.048	414.043