

External wall - awropi04a-13

external wall, timber frame construction, not ventilated, with dry lining, with rendering, other surface

Performance rating

Fire protection performance	REI from inside	60
	REI from outside	90

maximum ceiling height = 3 m; maximum load $E_{d,fi} = 32,0 \text{ kN/m}$
 Classified by MA39
 Classified by HFA

Thermal performance	U	0.15 $\text{W}/(\text{m}^2\text{K})$
	Diffusion	suitable

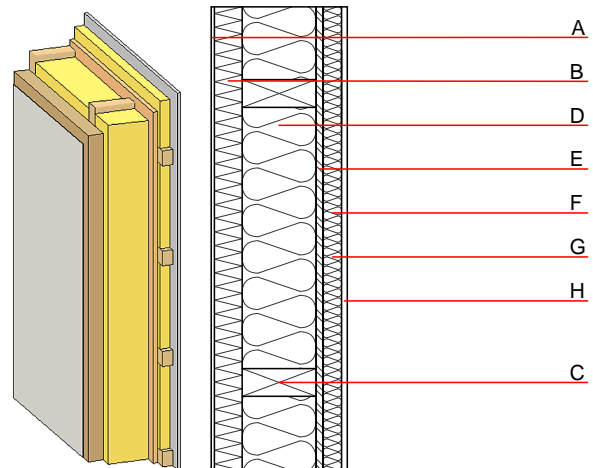
Calculated by HFA

Acoustic performance	R_w (C;C _{tr})	53(-3;-11) dB
	$L_{n,w}$ (C _i)	

vertical battens for the dry lining screwed onto the structural timber lead to an $R_w(C;C_{tr})=50(-2;-9)$ dB
 Assessed by MA39

Mass per unit area	m	66.60 kg/m^2
---------------------------	---	------------------------------

Calculation based on gypsum plaster board type DF



Register of building materials used for this application, cross-section (from outside to inside, dimensions in mm)

	Thickness	Building material	Thermal performance				Reaction to fire EN
			λ	μ min – max	ρ	c	
A	7.0	plaster	1.000	10 - 35	2000	1.130	A1
B	100.0	wood-fibre insulation board WF-PT [045; 180]	0.045	5 - 7	180	2.100	E
C	160.0	construction timber (60/...; e=625)	0.120	50	450	1.600	D
D	160.0	mineral wool [040; ≥ 16 ; $< 1000^\circ\text{C}$]	0.040	1	16	1.030	A1
E	15.0	OSB (sealed with airtight tape)	0.130	200	600	1.700	D
F	40.0	spruce wood cross battens (a=400) or battens offset)	0.120	50	450	1.600	D
G	40.0	mineral wool [040; ≥ 16 ; $< 1000^\circ\text{C}$]	0.040	1	16	1.030	A1
H	12.5	gypsum plaster board type DF or	0.250	10	800	1.050	A2
H	12.5	gypsum fibre board	0.320	21	1000	1.100	A2

Sustainability rating (per m^2)

Database ecoinvent

$OI3_{kon}$	45.3
-------------	------

Calculated by HFA

Details of sustainability rating

Database ecoinvent

Lifecycle (Phases)	GWP [kg CO ₂ -e.]	AP [kg SO ₂ -e.]	EP [kg PO ₄ -e.]	ODP [kg R11-e.]	POCP [kg Ethen-e.]	
A1 - A3		0.191	0.086	3,78E-6	0.028	

Lifecycle (Phases)	PERE [MJ]	PERM [MJ]	PERT [MJ]	PENRE [MJ]	PENRM [MJ]	PENRT [MJ]
A1 - A3	115.891	723.252	839.143	686.537	50.104	736.642