

External wall - awropi04b-06

external wall, timber frame construction, not ventilated, with dry lining, with rendering, other surface

Performance rating

Fire protection performance REI from inside 60
 REI from outside 60
 maximum ceiling height = 3 m; maximum load $E_{d,fi} = 32,0 \text{ kN/m}$
 Classified by HFA

Thermal performance U 0.12 W/(m²K)
 Diffusion suitable

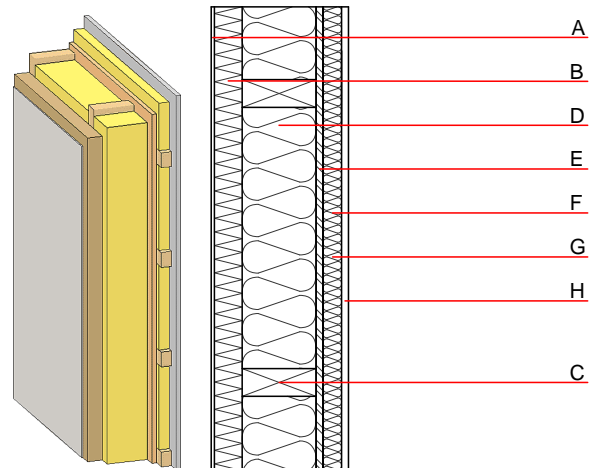
Calculated by HFA

Acoustic performance $R_w (C; C_{tr})$ 54(-2;-9) dB
 $L_{n,w} (C_i)$

Vertical battens for the dry lining screwed onto the ledger beams lead to an $R_w(C; C_{tr}) = 52(-1;-7) \text{ dB}$
 Assessed by MA39

Mass per unit area m 69.00 kg/m²

Calculation based on gypsum plaster board type DF



Note: e=625

Register of building materials used for this application, cross-section (from outside to inside, dimensions in mm)

	Thickness	Building material	Thermal performance				Reaction to fire EN
			λ	$\mu \text{ min} - \text{max}$	ρ	c	
A	7.0	plaster	1.000	10 - 35	2000	1.130	A1
B	60.0	wood-fibre insulation board WF-PT [045; 180]	0.045	5 - 7	180	2.100	E
C	240.0	construction timber (60/..; e=*)	0.120	50	450	1.600	D
D	240.0	mineral wool [040; ≥ 16 ; $< 1000^\circ\text{C}$]	0.040	1	16	1.030	A1
E	18.0	OSB (sealed with airtight tape)	0.130	200	600	1.700	D
F	80.0	spruce wood cross battens (a=400) or battens offset	0.120	50	450	1.600	D
G	80.0	mineral wool [040; ≥ 16 ; $< 1000^\circ\text{C}$] or air layer in type 02	0.040	1	16	1.030	A1
H	15.0	gypsum plaster board type DF or	0.250	10	800	1.050	A2
H	15.0	gypsum fibre board	0.320	21	1000	1.100	A2

Sustainability rating (per m²)

Database ecoinvent

013_{Kon} 45.8

Calculated by HFA

Details of sustainability rating

Database ecoinvent

Lifecycle (Phases)	GWP [kg CO ₂ -e.]	AP [kg SO ₂ -e.]	EP [kg PO ₄ -e.]	ODP [kg R11-e.]	POCP [kg Ethen-e.]	
A1 - A3		0.198	0.089	3,83E-6	0.031	

Lifecycle (Phases)	PERE [MJ]	PERM [MJ]	PERT [MJ]	PENRE [MJ]	PENRM [MJ]	PENRT [MJ]
A1 - A3	124.999	692.387	817.386	682.641	36.781	719.421