

**External wall - awropi05a-07**

external wall, timber frame construction, not ventilated, with dry lining, with rendering, other surface

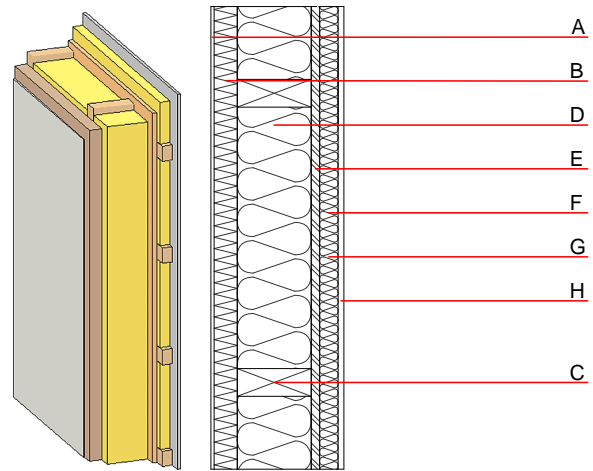
**Performance rating**

**Fire protection performance** REI from inside 60  
 REI from outside 60  
 maximum ceiling height = 3 m; maximum load  $E_{d,fi} = 32,0 \text{ kN/m}$   
 Classified by HFA

**Thermal performance** U 0.18  $\text{W}/(\text{m}^2\text{K})$   
 Diffusion suitable  
 Calculated by HFA

**Acoustic performance**  $R_w (C;C_{tr})$  53(-3;-10) dB  
 $L_{n,w} (C_i)$   
 vertical battens for the dry lining screwed onto the structural timber lead to an  $R_w(C;C_{tr})=51(-3;-10) \text{ dB}$   
 Assessed by MA39

**Mass per unit area** m 64.70  $\text{kg}/\text{m}^2$   
 Calculation based on gypsum plaster board type DF



Note: e=625

**Register of building materials used for this application, cross-section** (from outside to inside, dimensions in mm)

	Thickness	Building material	Thermal performance				Reaction to fire EN
			$\lambda$	$\mu \text{ min - max}$	$\rho$	c	
A	10.0	plaster	1.000	10 - 35	2000	1.130	A1
B	50.0	wood wool composite boards	0.090	2 - 5	370	2.000	B
C	160.0	construction timber (60/..; e=*)	0.120	50	450	1.600	D
D	160.0	mineral wool [035; 50; <1000°C]	0.035	1	50	1.030	A1
E	18.0	OSB	0.130	200	600	1.700	D
F	40.0	spruce wood cross battens (a=400) or battens offset)	0.120	50	450	1.600	D
G	40.0	mineral wool [035; 50; <1000°C] or air layer in type O2	0.035	1	50	1.030	A1
H	12.5	gypsum plaster board type DF or	0.250	10	800	1.050	A2
H	12.5	gypsum fibre board	0.320	21	1000	1.100	A2

**Sustainability rating** (per  $\text{m}^2$ )

Database ecoinvent

$OI3_{kon}$  49.7

Calculated by HFA

**Details of sustainability rating**

Database ecoinvent

Lifecycle (Phases)	GWP [kg CO <sub>2</sub> -e.]	AP [kg SO <sub>2</sub> -e.]	EP [kg PO <sub>4</sub> -e.]	ODP [kg R11-e.]	POCP [kg Ethen-e.]	
A1 - A3		0.204	0.089	3,90E-6	0.029	

Lifecycle (Phases)	PERE [MJ]	PERM [MJ]	PERT [MJ]	PENRE [MJ]	PENRM [MJ]	PENRT [MJ]
A1 - A3	96.431	442.588	539.020	678.852	13.314	692.166