

## External wall - awropi10b-07

external wall, timber frame construction, not ventilated, with dry lining, with rendering, other surface

### Performance rating

Fire protection performance	REI from inside	60
	REI from outside	60
maximum ceiling height = 3 m; maximum load $E_{d,fi} = 32,0 \text{ kN/m}$ Classified by HFA		

Thermal performance	U	0.18 $\text{W}/(\text{m}^2\text{K})$
	Diffusion	suitable

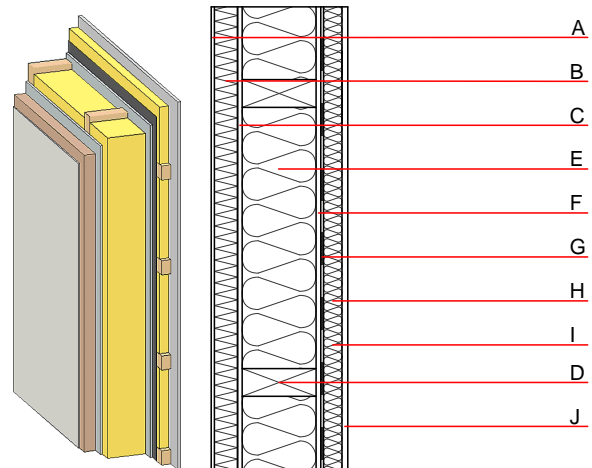
Calculated by HFA

Acoustic performance	$R_w (C; C_{tr})$	53(-3;-8) dB
	$L_{n,w} (C_i)$	

Vertical battens for the dry lining screwed onto the ledger beams lead to an  $R_w(C;C_{tr})=51(-1;-6)$  dB  
 Assessed by MA39

Mass per unit area	m	75.60 $\text{kg}/\text{m}^2$
--------------------	---	------------------------------

Calculation based on gypsum plaster board type DF



Note: e=625

### Register of building materials used for this application, cross-section (from outside to inside, dimensions in mm)

	Thickness	Building material	Thermal performance				Reaction to fire EN
			$\lambda$	$\mu \text{ min} - \text{max}$	$\rho$	c	
A	10.0	plaster	1.000	10 - 35	2000	1.130	A1
B	50.0	wood wool composite boards	0.090	2 - 5	370	2.000	B
C	10.0	gypsum fibre board	0.320	21	1000	1.100	A2
D	160.0	construction timber (60/...; e=*)	0.120	50	450	1.600	D
E	160.0	mineral wool [035; 50; <1000°C]	0.035	1	50	1.030	A1
F	12.5	gypsum fibre board	0.320	21	1000	1.100	A2
G		vapour barrier $s_d \geq 4\text{m}$			1000		
H	40.0	spruce wood cross battens (a=400) or battens offset	0.120	50	450	1.600	D
I	40.0	mineral wool [035; 50; <1000°C] or air layer in type 02	0.035	1	50	1.030	A1
J	12.5	gypsum plaster board type DF or	0.250	10	800	1.050	A2
J	12.5	gypsum fibre board	0.320	21	1000	1.100	A2

### Sustainability rating (per $\text{m}^2$ )

#### Database ecoinvent

O13 <sub>Kon</sub>	50.8
--------------------	------

Calculated by HFA

## Details of sustainability rating

### Database ecoinvent

Lifecycle (Phases)	GWP [kg CO <sub>2</sub> -e.]	AP [kg SO <sub>2</sub> -e.]	EP [kg PO <sub>4</sub> -e.]	ODP [kg R11-e.]	POCP [kg Ethen-e.]	
A1 - A3		0.192	0.085	4,04E-6	0.025	
Lifecycle (Phases)	PERE [MJ]	PERM [MJ]	PERT [MJ]	PENRE [MJ]	PENRM [MJ]	PENRT [MJ]
A1 - A3	66.828	266.772	333.600	679.888	6.585	686.473