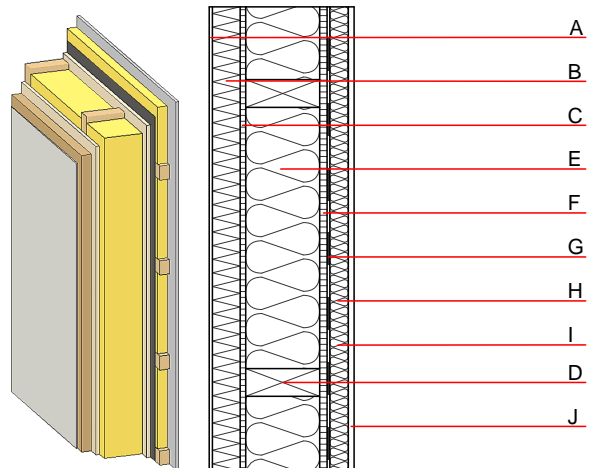


External wall - awropi15a-04

external wall, timber frame construction, not ventilated, with dry lining, with rendering, other surface

Performance rating

| | | |
|---|------------------|---------------------------|
| Fire protection performance | REI from inside | 60 |
| | REI from outside | 60 |
| maximum ceiling height = 3 m; maximum load $E_{d,fi} = 32,0 \text{ kN/m}$ Classified by HFA | | |
| Thermal performance | U | 0.13 W/(m ² K) |
| | Diffusion | suitable |
| Calculated by HFA | | |
| Acoustic performance | $R_w (C;C_{tr})$ | 54(-3;-10) dB |
| | $L_{n,w} (C_i)$ | |
| Vertical battens for the dry lining screwed onto the ledger beams lead to an $R_w(C;C_{tr})=51(-1;-7) \text{ dB}$ Assessed by MA39 | | |
| Mass per unit area | m | 76.80 kg/m ² |
| Calculation based on gypsum plaster board type DF | | |



Note: e=625

Register of building materials used for this application, cross-section (from outside to inside, dimensions in mm)

| | Thickness | Building material | Thermal performance | | | | Reaction to fire EN |
|---|-----------|---|---------------------|--------------------------------|--------|-------|------------------------|
| | | | λ | $\mu \text{ min} - \text{max}$ | ρ | c | |
| A | 7.0 | plaster | 1.000 | 10 - 35 | 2000 | 1.130 | A1 |
| B | 60.0 | wood-fibre insulation board WF-PT [045; 180] | 0.045 | 5 - 7 | 180 | 2.100 | E |
| C | 12.0 | particleboard P5 | 0.130 | 50 - 100 | 700 | 1.700 | D |
| D | 240.0 | construction timber (60/...; e=*) | 0.120 | 50 | 450 | 1.600 | D |
| E | 240.0 | mineral wool [040; ≥ 16 ; $< 1000^\circ\text{C}$] | 0.040 | 1 | 16 | 1.030 | A1 |
| F | 16.0 | particleboard P4 | 0.130 | 50 - 100 | 700 | 1.700 | D |
| G | | vapour barrier $s_d \geq 7 \text{ m}$ | | | 1000 | | |
| H | 40.0 | spruce wood cross battens (a=400) or battens offset) | 0.120 | 50 | 450 | 1.600 | D |
| I | 40.0 | mineral wool [040; ≥ 16 ; $< 1000^\circ\text{C}$] | 0.040 | 1 | 16 | 1.030 | A1 |
| J | 12.5 | gypsum plaster board type DF or | 0.250 | 10 | 800 | 1.050 | A2 |
| J | 12.5 | gypsum fibre board | 0.320 | 21 | 1000 | 1.100 | A2 |

Sustainability rating (per m²)

Database ecoinvent

| | |
|--------------------|------|
| 013 _{Kon} | 48.5 |
| Calculated by HFA | |

Details of sustainability rating

Database ecoinvent

| Lifecycle (Phases) | GWP [kg CO ₂ -e.] | AP [kg SO ₂ -e.] | EP [kg PO ₄ -e.] | ODP [kg R11-e.] | POCP [kg Ethen-e.] | |
|-----------------------|---------------------------------|--------------------------------|--------------------------------|--------------------|-----------------------|--|
| A1 - A3 | | 0.199 | 0.089 | 3,68E-6 | 0.034 | |

| Lifecycle (Phases) | PERE [MJ] | PERM [MJ] | PERT [MJ] | PENRE [MJ] | PENRM [MJ] | PENRT [MJ] |
|-----------------------|--------------|--------------|--------------|---------------|---------------|---------------|
| A1 - A3 | 91.803 | 761.518 | 853.322 | 749.080 | 73.105 | 822.185 |