

External wall - awropi25a-00

external wall, timber frame construction, not ventilated, with dry lining, with rendering, wooden surface

Performance rating

Fire protection performance	REI from inside	30
	REI from outside	90
maximum ceiling height = 3 m; maximum load $E_{d,fi} = 32,0 \text{ kN/m}$ Classified by HFA		

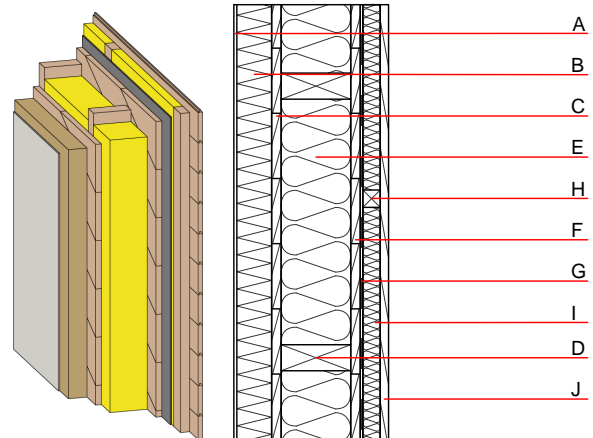
Thermal performance	U	0.13 $\text{W}/(\text{m}^2\text{K})$
	Diffusion	suitable

Calculated by HFA

Acoustic performance	$R_w (C; C_{tr})$	50(-3;-10) dB
	$L_{n,w} (C_i)$	

Assessed by TGM

Mass per unit area	m	69.00 kg/m^2
--------------------	---	------------------------------



Register of building materials used for this application, cross-section (from outside to inside, dimensions in mm)

	Thickness	Building material	Thermal performance				Reaction to fire EN
			λ	μ min - max	ρ	c	
A	7.0	plaster	1.000	10 - 35	2000	1.130	A1
B	80.0	WF-PT [042; 180]	0.042	3 - 7	180	2.100	E
C	22.0	planking spruce wood diagonal	0.120	50	450	1.600	D
D	160.0	construction timber (60/..; e=625)	0.120	50	450	1.600	D
E	160.0	mineral wool [0,35; ≥ 20 ; $< 1000^\circ\text{C}$]	0.035	1	20	1.030	A1
F	22.0	planking spruce wood diagonal	0.120	50	450	1.600	D
G		vapour barrier $s_{d,eq} \geq 6\text{m}$			1000		
H	40.0	spruce wood cross battens (a=400) or battens offset)	0.120	50	450	1.600	D
I	40.0	mineral wool [0,35; ≥ 20 ; $< 1000^\circ\text{C}$]	0.035	1	20	1.030	A1
J	19.0	planking tongue and groove	0.120	50	450	1.600	D

Sustainability rating (per m^2)

Database ecoinvent

$OI3_{Kon}$	35.2
-------------	------

Calculated by HFA

Details of sustainability rating

Database ecoinvent

Lifecycle (Phases)	GWP [kg CO ₂ -e.]	AP [kg SO ₂ -e.]	EP [kg PO ₄ -e.]	ODP [kg R11-e.]	POCP [kg Ethen-e.]	
A1 - A3		0.179	0.081	3,22E-6	0.034	

Lifecycle (Phases)	PERE [MJ]	PERM [MJ]	PERT [MJ]	PENRE [MJ]	PENRM [MJ]	PENRT [MJ]
A1 - A3	150.201	918.801	1069.001	580.740	27.301	608.042