

External wall - awropi25a-07

external wall, timber frame construction, not ventilated, with dry lining, with rendering, wooden surface

Performance rating

Fire protection performance	REI from inside	60
	REI from outside	90
maximum ceiling height = 3 m; maximum load $E_{d,fi} = 32,0 \text{ kN/m}$ Classified by HFA		

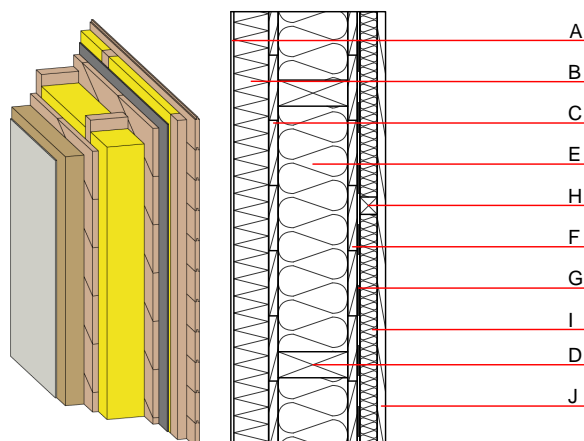
Thermal performance	U	0.14 W/(m ² K)
	Diffusion	suitable

Calculated by HFA

Acoustic performance	$R_w (C; C_{tr})$	50(-3;-10) dB
	$L_{n,w} (C_i)$	

Assessed by TGM

Mass per unit area	m	71.70 kg/m ²
--------------------	---	-------------------------



Register of building materials used for this application, cross-section (from outside to inside, dimensions in mm)

	Thickness	Building material	Thermal performance				Reaction to fire EN
			λ	$\mu \text{ min} - \text{max}$	ρ	c	
A	7.0	plaster	1.000	10 - 35	2000	1.130	A1
B	80.0	WF-PT [042; 180]	0.042	3 - 7	180	2.100	E
C	22.0	planking spruce wood diagonal	0.120	50	450	1.600	D
D	160.0	construction timber (60/-; e=625)	0.120	50	450	1.600	D
E	160.0	mineral wool [038; ≥33; ≥1000°C]	0.038	1	33	1.030	A1
F	22.0	planking spruce wood diagonal	0.120	50	450	1.600	D
G		vapour barrier sd≥ 6m			1000		
H	40.0	spruce wood cross battens (a=400) or battens offset)	0.120	50	450	1.600	D
I	40.0	mineral wool [038; ≥33; ≥1000°C]	0.038	1	33	1.030	A1
J	19.0	planking tongue and groove	0.120	50	450	1.600	D

Sustainability rating (per m²)

Database ecoinvent

OI3 _{Kon}	36.8
--------------------	------

Calculated by HFA

Details of sustainability rating

Database ecoinvent

Lifecycle (Phases)	GWP [kg CO ₂ -e.]	AP [kg SO ₂ -e.]	EP [kg PO ₄ -e.]	ODP [kg R11-e.]	POCP [kg Ethen-e.]	
A1 - A3		0.200	0.073	2,60E-6	0.064	

Lifecycle (Phases)	PERE [MJ]	PERM [MJ]	PERT [MJ]	PENRE [MJ]	PENRM [MJ]	PENRT [MJ]
A1 - A3	146.758	918.801	1065.559	536.936	27.301	564.237