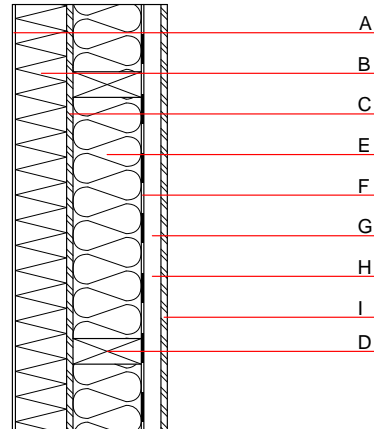


External wall - awropi28a-03

external wall, timber frame construction, not ventilated, with dry lining, with rendering, wooden surface

Performance rating

Fire protection performance	REI from inside	60
	REI from outside	90
maximum ceiling height = 3 m; maximum load $E_{d,fi} = 32,0 \text{ kN/m}$ Classified by HFA		
Thermal performance	U	0.16 W/(m ² K)
	Diffusion	suitable
Calculated by HFA		
Acoustic performance	$R_w (C; C_{tr})$	50(-3;-10) dB
	$L_{n,w} (C_i)$	
If battens for the dry lining are carried out vertically and screwed to the structural timber the result is $R_w \geq 47 \text{ dB}$ Assessed by HFA		
Mass per unit area	m	60.20 kg/m ²



Register of building materials used for this application, cross-section (from outside to inside, dimensions in mm)

	Thickness	Building material	Thermal performance				Reaction to fire EN
			λ	$\mu \text{ min} - \text{max}$	ρ	c	
A	5.0	plaster	1.000	10 - 35	2000	1.130	A1
B	120.0	MW-PT [038; 95]	0.038		95		A1
C	15.0	OSB	0.130	200	600	1.700	D
D	240.0	construction timber (60/...; e=625)	0.120	50	450	1.600	D
E	240.0	mineral wool [038; ≥ 33 ; $\geq 1000^\circ\text{C}$]	0.038	1	33	1.030	A1
F		vapour barrier $s_d \geq 23 \text{ m}$			1000		
G	40.0	spruce wood cross battens 40/60mm (a=400)	0.120	50	450	1.600	D
H	40.0	air layer	0.000	1	1	1.008	
I	16.0	Kronospan OSB-Firestop	0.110	150 - 170	660	1.700	B

Sustainability rating (per m²)

Database ecoinvent

013_{Kon} 71.1

Calculated by HFA

Details of sustainability rating

Database ecoinvent

Lifecycle (Phases)	GWP [kg CO ₂ -e.]	AP [kg SO ₂ -e.]	EP [kg PO ₄ -e.]	ODP [kg R11-e.]	POCP [kg Ethen-e.]	
A1 - A3		0.340	0.100	2,98E-6	0.125	

Lifecycle (Phases)	PERE [MJ]	PERM [MJ]	PERT [MJ]	PENRE [MJ]	PENRM [MJ]	PENRT [MJ]
A1 - A3	85.995	528.408	614.402	733.450	27.222	760.672