

External wall - awropi32a-01

external wall, timber frame construction, not ventilated, with dry lining, with rendering, Gipsplatte

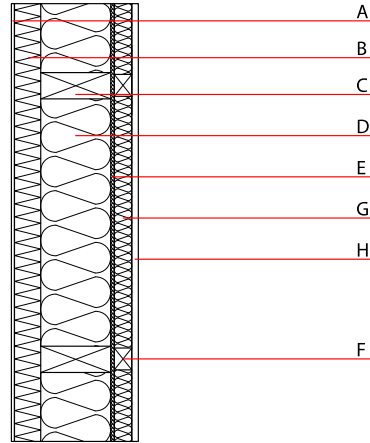
Performance rating

Fire protection performance REI from inside 60
 REI from outside 60
 maximum ceiling height = 3 m; maximum load $E_{d,fi} = 32,0 \text{ kN/m}$
 Classified by HFA

Thermal performance U 0.19 $\text{W}/(\text{m}^2\text{K})$
 Diffusion suitable
 Calculated by HFA

Acoustic performance $R_w (C;C_{tr})$ 42(-1;-6) dB
 $L_{n,w} (C_i)$
 Assessed by HFA

Mass per unit area m 57.20 kg/m^2
 Calculation based on gypsum plaster board type DF



Register of building materials used for this application, cross-section (from outside to inside, dimensions in mm)

	Thickness	Building material	Thermal performance				Reaction to fire EN
			λ	μ min – max	ρ	c	
A	7.0	plaster	1.000	10 - 35	2000	1.130	A1
B	60.0	wood-fibre insulation board WF-PT [048; 180]	0.048	5 - 7	180	2.100	E
C	160.0	construction timber (60/...; e=625)	0.120	50	450	1.600	D
D	160.0	Cellulose fibre [039; 50]	0.039	3	50	2.110	E
E	8.0	Funderplan Biofaser (sealed with airtight tape)	0.180	185	1000	1.700	D
F	40.0	spruce wood battens vertical	0.120	50	450	1.600	D
G	40.0	air layer	0.000	1	1	1.008	
H	15.0	gypsum plaster board type DF or	0.250	10	800	1.050	A2
H	15.0	gypsum fibre board	0.320	21	1000	1.100	A2

Sustainability rating (per m^2)

Database ecoinvent

$OI3_{Kon}$ 26.5

Calculated by HFA

Details of sustainability rating

Database ecoinvent

Lifecycle (Phases)	GWP [kg CO ₂ -e.]	AP [kg SO ₂ -e.]	EP [kg PO ₄ -e.]	ODP [kg R11-e.]	POCP [kg Ethen-e.]	
A1 - A3		0.117	0.056	2,58E-6	0.016	

Lifecycle (Phases)	PERE [MJ]	PERM [MJ]	PERT [MJ]	PENRE [MJ]	PENRM [MJ]	PENRT [MJ]
A1 - A3	68.253	555.022	623.275	440.162	20.689	460.850