

External wall - awropo09a-08

external wall, timber frame construction, not ventilated, without dry lining, with rendering, other surface

Performance rating

Fire protection performance	REI from inside	60
	REI from outside	60
maximum ceiling height = 3 m; maximum load $E_{d,fi}$ = 32,0 kN/m		
Classified by MA39		
Classified by HFA		

Thermal performance	U	0.21 W/(m ² K)
	Diffusion	suitable

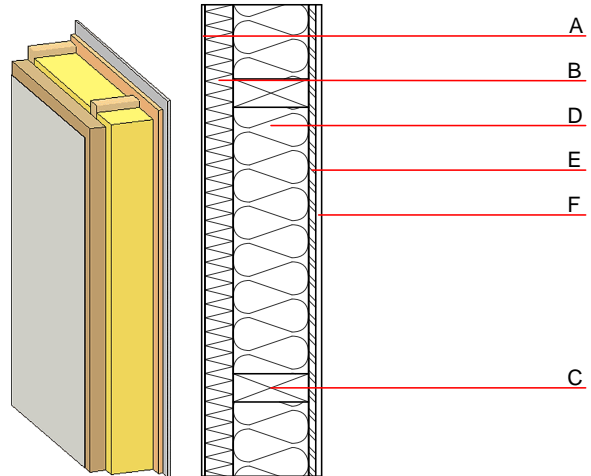
Calculated by HFA

Acoustic performance	R_w (C;C _{tr})	50(-3;-11) dB
	$L_{n,w}$ (C _i)	

Assessed by MA39

Mass per unit area	m	57.70 kg/m ²
--------------------	---	-------------------------

Calculation based on gypsum plaster board type DF



Register of building materials used for this application, cross-section (from outside to inside, dimensions in mm)

	Thickness	Building material	Thermal performance				Reaction to fire EN
			λ	μ min – max	ρ	c	
A	7.0	plaster	1.000	10 - 35	2000	1.130	A1
B	60.0	wood-fibre insulation board WF-PT [045; 180]	0.045	5 - 7	180	2.100	E
C	160.0	construction timber (60/..; e=400)	0.120	50	450	1.600	D
D	160.0	mineral wool [040; ≥16; <1000°C]	0.040	1	16	1.030	A1
E	15.0	OSB (sealed with airtight tape)	0.130	200	600	1.700	D
F	12.5	gypsum plaster board type DF or	0.250	10	800	1.050	A2
F	12.5	gypsum fibre board	0.320	21	1000	1.100	A2

Sustainability rating (per m²)

Database ecoinvent

013 _{Kon}	34.2
--------------------	------

Calculated by HFA

Details of sustainability rating

Database ecoinvent

Lifecycle (Phases)	GWP [kg CO ₂ -e.]	AP [kg SO ₂ -e.]	EP [kg PO ₄ -e.]	ODP [kg R11-e.]	POCP [kg Ethen-e.]	
A1 - A3		0.149	0.066	2,94E-6	0.023	
Lifecycle (Phases)	PERE [MJ]	PERM [MJ]	PERT [MJ]	PENRE [MJ]	PENRM [MJ]	PENRT [MJ]
A1 - A3	102.238	589.056	691.294	527.162	34.612	561.774