

External wall - awropo11a-04

external wall, timber frame construction, not ventilated, without dry lining, with rendering, other surface

Performance rating

Fire protection performance REI from inside 60
 REI from outside 30
 maximum ceiling height = 3 m; maximum load $E_{d,fi} = 32,0 \text{ kN/m}$
 Classified by HFA

Thermal performance U 0.18 $\text{W}/(\text{m}^2\text{K})$
 Diffusion suitable

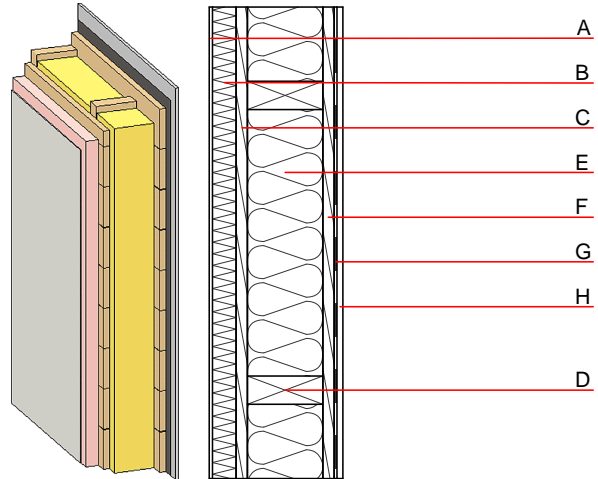
Calculated by HFA

Acoustic performance $R_w (C; C_{tr})$ 45(-2;-6) dB
 $L_{n,w} (C_i)$

Assessed by MA39

Mass per unit area m 57.80 kg/m^2

Calculation based on gypsum plaster board type DF



Note: e=625

Register of building materials used for this application, cross-section (from outside to inside, dimensions in mm)

	Thickness	Building material	Thermal performance				Reaction to fire EN
			λ	μ min - max	ρ	c	
A	4.0	plaster	1.000	10 - 35	2000	1.130	A1
B	50.0	Polystyrene EPS-F [0,040]	0.040	20 - 50	17	1.450	E
C	25.0	planking spruce wood	0.120	50	450	1.600	D
D	160.0	construction timber (60/160; e=*)	0.120	50	450	1.600	D
E	160.0	mineral wool [035; 50; <1000°C]	0.035	1	50	1.030	A1
F	25.0	planking spruce wood	0.120	50	450	1.600	D
G		vapour barrier $s_d \geq 16\text{m}$			1000		
H	12.5	gypsum plaster board type DF or	0.250	10	800	1.050	A2
H	12.5	gypsum fibre board	0.320	21	1000	1.100	A2

Sustainability rating (per m^2)

Database ecoinvent

$OI3_{kon}$ 38.7

Calculated by HFA

Details of sustainability rating

Database ecoinvent

Lifecycle (Phases)	GWP [kg CO ₂ -e.]	AP [kg SO ₂ -e.]	EP [kg PO ₄ -e.]	ODP [kg R11-e.]	POCP [kg Ethen-e.]	
A1 - A3		0.171	0.074	3,02E-6	0.035	

Lifecycle (Phases)	PERE [MJ]	PERM [MJ]	PERT [MJ]	PENRE [MJ]	PENRM [MJ]	PENRT [MJ]
A1 - A3	104.366	535.233	639.599	547.265	36.048	583.313