

## External wall - awropo11a-08

external wall, timber frame construction, not ventilated, without dry lining, with rendering, other surface

### Performance rating

Fire protection performance	REI from inside	60
	REI from outside	30
maximum ceiling height = 3 m; maximum load $E_{d,fi} = 32,0 \text{ kN/m}$ Classified by HFA		

Thermal performance	U	0.20 W/(m <sup>2</sup> K)
	Diffusion	suitable

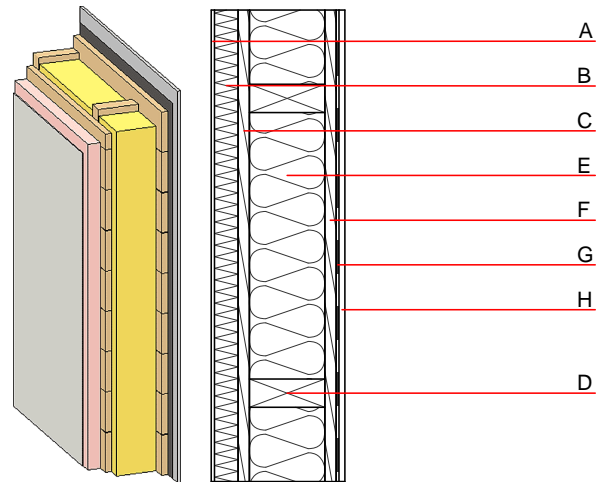
Calculated by HFA

Acoustic performance	$R_w (C; C_{tr})$	44(-2;-6) dB
	$L_{n,w} (C_i)$	

Assessed by MA39

Mass per unit area	m	57.00 kg/m <sup>2</sup>
--------------------	---	-------------------------

Calculation based on gypsum plaster board type DF



Note: e=400

### Register of building materials used for this application, cross-section (from outside to inside, dimensions in mm)

	Thickness	Building material	Thermal performance				Reaction to fire	
			$\lambda$	$\mu \text{ min - max}$	$\rho$	c	EN	
A	4.0	plaster	1.000	10 - 35	2000	1.130	A1	
B	50.0	Polystyrene EPS-F [0,040]	0.040	20 - 50	17	1.450	E	
C	25.0	planking spruce wood	0.120	50	450	1.600	D	
D	160.0	construction timber (60/160; e=*)	0.120	50	450	1.600	D	
E	160.0	mineral wool [040; $\geq 16$ ; $< 1000^\circ\text{C}$ ]	0.040	1	16	1.030	A1	
F	25.0	planking spruce wood	0.120	50	450	1.600	D	
G		vapour barrier sd $\geq 16\text{m}$			1000			
H	12.5	gypsum plaster board type DF or	0.250	10	800	1.050	A2	
H	12.5	gypsum fibre board	0.320	21	1000	1.100	A2	

### Sustainability rating (per m<sup>2</sup>)

#### Database ecoinvent

013<sub>Kon</sub> 20.2

Calculated by HFA

## Details of sustainability rating

### Database ecoinvent

Lifecycle (Phases)	GWP [kg CO <sub>2</sub> -e.]	AP [kg SO <sub>2</sub> -e.]	EP [kg PO <sub>4</sub> -e.]	ODP [kg R11-e.]	POCP [kg Ethen-e.]	
A1 - A3		0.104	0.043	1,84E-6	0.029	

Lifecycle (Phases)	PERE [MJ]	PERM [MJ]	PERT [MJ]	PENRE [MJ]	PENRM [MJ]	PENRT [MJ]
A1 - A3	106.946	605.986	712.932	343.208	36.048	379.256