

External wall - awropo13a-04

external wall, timber frame construction, not ventilated, without dry lining, with rendering, other surface

Performance rating

Fire protection performance	REI from inside	60
	REI from outside	30
maximum ceiling height = 3 m; maximum load $E_{d,fi}$ = 32,0 kN/m		
Classified by HFA		

Thermal performance	U	0.18 W/(m ² K)
	Diffusion	suitable

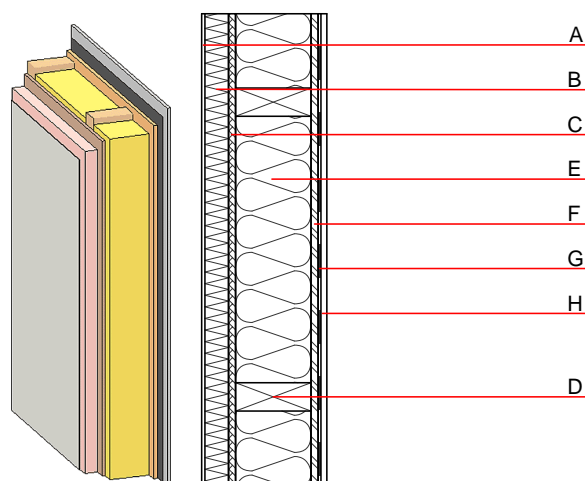
Calculated by HFA

Acoustic performance	R_w (C ; C_{tr})	45(-2;-6) dB
	$L_{n,w}$ (C_i)	

Assessed by MA39

Mass per unit area	m	51.60 kg/m ²
--------------------	---	-------------------------

Calculation based on gypsum plaster board type DF



Note: e=625

Register of building materials used for this application, cross-section (from outside to inside, dimensions in mm)

	Thickness	Building material	Thermal performance				Reaction to fire EN
			λ	μ min – max	ρ	c	
A	4.0	plaster	1.000	10 - 35	2000	1.130	A1
B	50.0	Polystyrene EPS-F [0,040]	0.040	20 - 50	17	1.450	E
C	15.0	fibreboard (MDF)	0.140	11	600	1.700	D
D	160.0	construction timber (60/160; e=*)	0.120	50	450	1.600	D
E	160.0	mineral wool [035; 50; <1000°C]	0.035	1	50	1.030	A1
F	15.0	OSB	0.130	200	600	1.700	D
G		vapour barrier $s_d \geq 9m$			1000		
H	12.5	gypsum plaster board type DF or	0.250	10	800	1.050	A2
H	12.5	gypsum fibre board	0.320	21	1000	1.100	A2

Sustainability rating (per m²)

Database ecoinvent

013_{Kon} 47.0

Calculated by HFA

Details of sustainability rating

Database ecoinvent

Lifecycle (Phases)	GWP [kg CO ₂ -e.]	AP [kg SO ₂ -e.]	EP [kg PO ₄ -e.]	ODP [kg R11-e.]	POCP [kg Ethen-e.]	
A1 - A3		0.187	0.080	3,18E-6	0.031	

Lifecycle (Phases)	PERE [MJ]	PERM [MJ]	PERT [MJ]	PENRE [MJ]	PENRM [MJ]	PENRT [MJ]
A1 - A3	84.520	419.433	503.953	621.170	64.940	686.109