

## External wall - awropo13a-06

external wall, timber frame construction, not ventilated, without dry lining, with rendering, other surface

### Performance rating

<b>Fire protection performance</b>	REI from inside	60
	REI from outside	30

maximum ceiling height = 3 m; maximum load  $E_{d,fi} = 32,0 \text{ kN/m}$   
 Classified by HFA

<b>Thermal performance</b>	U	0.20 $\text{W}/(\text{m}^2\text{K})$
	Diffusion	suitable

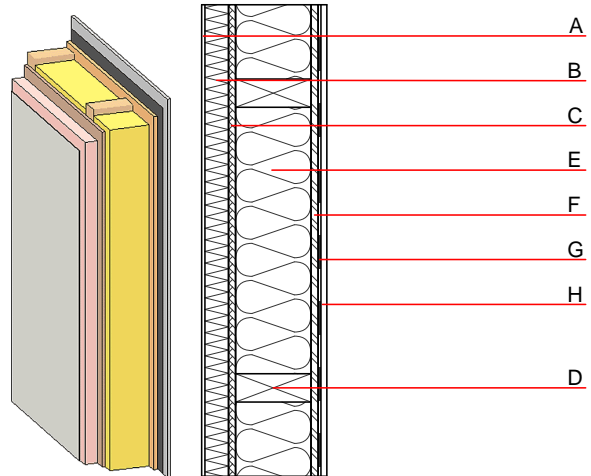
Calculated by HFA

<b>Acoustic performance</b>	$R_w (C; C_{tr})$	44(-2;-6) dB
	$L_{n,w} (C_i)$	

Assessed by MA39

<b>Mass per unit area</b>	m	55.20 $\text{kg}/\text{m}^2$
---------------------------	---	------------------------------

Calculation based on gypsum plaster board type DF



Note: e=625

### Register of building materials used for this application, cross-section (from outside to inside, dimensions in mm)

	Thickness	Building material	Thermal performance				Reaction to fire EN
			$\lambda$	$\mu$ min - max	$\rho$	c	
A	4.0	plaster	1.000	10 - 35	2000	1.130	A1
B	50.0	Polystyrene EPS-F [0,040]	0.040	20 - 50	17	1.450	E
C	15.0	fibreboard (MDF)	0.140	11	600	1.700	D
D	160.0	construction timber (60/160; e=*)	0.120	50	450	1.600	D
E	160.0	cellulose fibre [040; E]	0.040	1 - 2	55	2.000	E
F	15.0	OSB	0.130	200	600	1.700	D
G		vapour barrier $sd \geq 9\text{m}$			1000		
H	12.5	gypsum plaster board type DF or	0.250	10	800	1.050	A2
H	12.5	gypsum fibre board	0.320	21	1000	1.100	A2

### Sustainability rating (per $\text{m}^2$ )

#### Database ecoinvent

$O13_{kon}$  23.3

Calculated by HFA

**Details of sustainability rating**

Database ecoinvent

Lifecycle (Phases)	GWP [kg CO <sub>2</sub> -e.]	AP [kg SO <sub>2</sub> -e.]	EP [kg PO <sub>4</sub> -e.]	ODP [kg R11-e.]	POCP [kg Ethen-e.]	
A1 - A3		0.105	0.041	1,63E-6	0.021	

Lifecycle (Phases)	PERE [MJ]	PERM [MJ]	PERT [MJ]	PENRE [MJ]	PENRM [MJ]	PENRT [MJ]
A1 - A3	77.637	500.530	578.167	344.129	64.940	409.069