

External wall - awropo20a-04

external wall, timber frame construction, not ventilated, without dry lining, with rendering, other surface

Performance rating

Fire protection performance	REI from inside	60
	REI from outside	60
maximum ceiling height = 3 m; maximum load $E_{d,fi}$ = 32,0 kN/m		
Classified by HFA		

Thermal performance	U	0.18 W/(m ² K)
	Diffusion	suitable

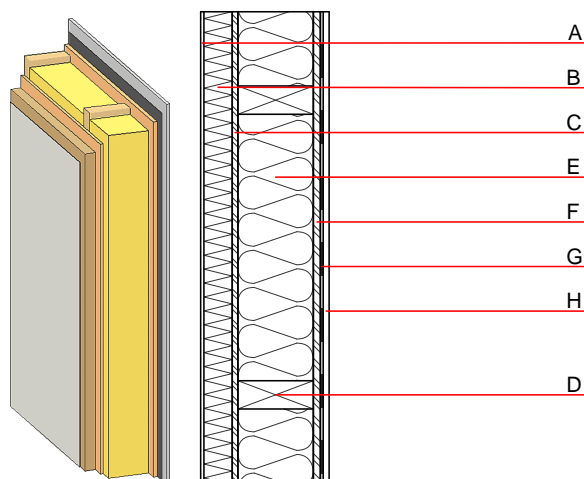
Calculated by HFA

Acoustic performance	R_w (C;C _{tr})	52(-3;9) dB
	$L_{n,w}$ (C _i)	

Assessed by MA39

Mass per unit area	m	71.70 kg/m ²
--------------------	---	-------------------------

Calculation based on gypsum plaster board type DF



Note: e=625

Register of building materials used for this application, cross-section (from outside to inside, dimensions in mm)

	Thickness	Building material	Thermal performance				Reaction to fire EN
			λ	μ min – max	ρ	c	
A	7.0	plaster	1.000	10 - 35	2000	1.130	A1
B	60.0	wood-fibre insulation board WF-PT [045; 180]	0.045	5 - 7	180	2.100	E
C	12.0	OSB	0.130	200	600	1.700	D
D	160.0	construction timber (60/-; e=*)	0.120	50	450	1.600	D
E	160.0	mineral wool [035; 50; <1000 °C]	0.035	1	50	1.030	A1
F	15.0	OSB	0.130	200	600	1.700	D
G		vapour barrier sd≥ 9m			1000		
H	12.5	gypsum plaster board type DF or	0.250	10	800	1.050	A2
H	12.5	gypsum fibre board	0.320	21	1000	1.100	A2

Sustainability rating (per m²)

Database ecoinvent

013_{Kon} 53.3

Calculated by HFA

Details of sustainability rating

Database ecoinvent

Lifecycle (Phases)	GWP [kg CO ₂ -e.]	AP [kg SO ₂ -e.]	EP [kg PO ₄ -e.]	ODP [kg R11-e.]	POCP [kg Ethen-e.]	
A1 - A3		0.220	0.098	4,18E-6	0.031	

Lifecycle (Phases)	PERE [MJ]	PERM [MJ]	PERT [MJ]	PENRE [MJ]	PENRM [MJ]	PENRT [MJ]
A1 - A3	119.402	588.609	708.011	747.913	42.864	790.777