

## External wall - awropo22a-02

external wall, timber frame construction, not ventilated, without dry lining, with rendering, other surface

### Performance rating

Fire protection performance	REI from inside	45
	REI from outside	60
maximum ceiling height = 3 m; maximum load $E_{d,fi} = 32,0 \text{ kN/m}$ Classified by HFA		

Thermal performance	U	0.17 W/(m <sup>2</sup> K)
	Diffusion	suitable

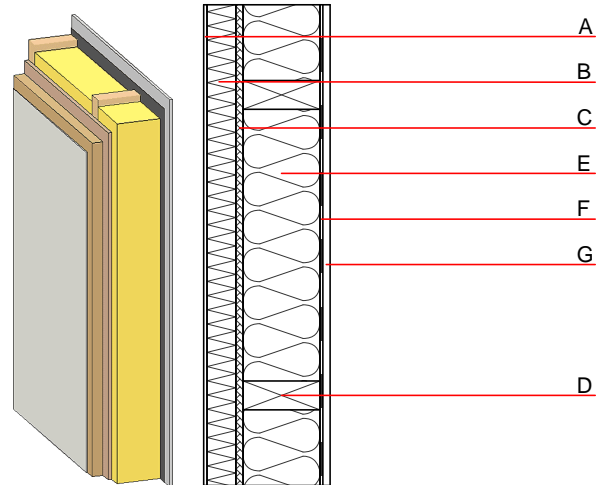
Calculated by HFA

Acoustic performance	$R_w (C; C_{tr})$	51 (-3; 9) dB
	$L_{n,w} (C_i)$	

Assessed by MA39

Mass per unit area	m	65.50 kg/m <sup>2</sup>
--------------------	---	-------------------------

Calculation based on GF



Note: e=625

### Register of building materials used for this application, cross-section (from outside to inside, dimensions in mm)

	Thickness	Building material	Thermal performance				Reaction to fire EN
			$\lambda$	$\mu \text{ min} - \text{max}$	$\rho$	c	
A	7.0	plaster	1.000	10 - 35	2000	1.130	A1
B	60.0	wood-fibre insulation board WF-PT [045; 180]	0.045	5 - 7	180	2.100	E
C	15.0	fibreboard (MDF)	0.140	11	600	1.700	D
D	200.0	construction timber (60/..; e=*)	0.120	50	450	1.600	D
E	200.0	mineral wool [040; $\geq 16$ ; $< 1000^\circ\text{C}$ ]	0.040	1	16	1.030	A1
F		vapour barrier $s_d \geq 3\text{m}$			1000		
G	15.0	gypsum fibre board or	0.320	21	1000	1.100	A2
G	15.0	gypsum plaster board type DF	0.250	10	800	1.050	A2

### Sustainability rating (per m<sup>2</sup>)

#### Database ecoinvent

013<sub>Kon</sub> 35.7

Calculated by HFA

## Details of sustainability rating

### Database ecoinvent

Lifecycle (Phases)	GWP [kg CO <sub>2</sub> -e.]	AP [kg SO <sub>2</sub> -e.]	EP [kg PO <sub>4</sub> -e.]	ODP [kg R11-e.]	POCP [kg Ethen-e.]	
A1 - A3		0.147	0.066	2,79E-6	0.020	

Lifecycle (Phases)	PERE [MJ]	PERM [MJ]	PERT [MJ]	PENRE [MJ]	PENRM [MJ]	PENRT [MJ]
A1 - A3	74.692	481.490	556.181	519.638	39.775	559.413