

**External wall - awropo22a-06**

external wall, timber frame construction, not ventilated, without dry lining, with rendering, other surface

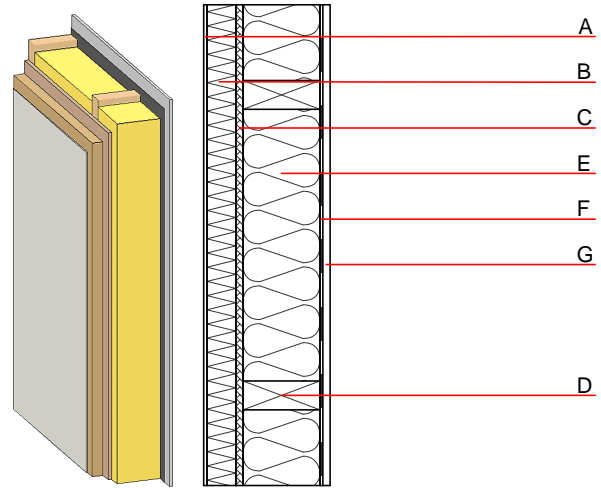
**Performance rating**

**Fire protection performance** REI from inside 45  
 REI from outside 60  
 maximum ceiling height = 3 m; maximum load  $E_{d,fi} = 32,0 \text{ kN/m}$   
 Classified by HFA

**Thermal performance** U 0.20  $\text{W}/(\text{m}^2\text{K})$   
 Diffusion suitable  
 Calculated by HFA

**Acoustic performance**  $R_w (C; C_{tr})$  50(-3;-9) dB  
 $L_{n,w} (C_i)$   
 Assessed by MA39

**Mass per unit area** m 68.70  $\text{kg}/\text{m}^2$   
 Calculation based on GF



Note: e=625

**Register of building materials used for this application, cross-section** (from outside to inside, dimensions in mm)

	Thickness	Building material	Thermal performance				Reaction to fire EN
			$\lambda$	$\mu$ min - max	$\rho$	c	
A	7.0	plaster	1.000	10 - 35	2000	1.130	A1
B	60.0	wood-fibre insulation board WF-PT [045; 180]	0.045	5 - 7	180	2.100	E
C	15.0	fibreboard (MDF)	0.140	11	600	1.700	D
D	160.0	construction timber (60/..; e=*)	0.120	50	450	1.600	D
E	160.0	cellulose fibre [040; E]	0.040	1 - 2	55	2.000	E
F		vapour barrier $s_d \geq 3\text{m}$			1000		
G	15.0	gypsum fibre board or	0.320	21	1000	1.100	A2
G	15.0	gypsum plaster board type DF	0.250	10	800	1.050	A2

**Sustainability rating** (per  $\text{m}^2$ )

**Database ecoinvent**

$OI3_{kon}$  27.5

Calculated by HFA

**Details of sustainability rating**

Database ecoinvent

Lifecycle (Phases)	GWP [kg CO <sub>2</sub> -e.]	AP [kg SO <sub>2</sub> -e.]	EP [kg PO <sub>4</sub> -e.]	ODP [kg R11-e.]	POCP [kg Ethen-e.]	
A1 - A3		0.123	0.053	2,25E-6	0.016	

Lifecycle (Phases)	PERE [MJ]	PERM [MJ]	PERT [MJ]	PENRE [MJ]	PENRM [MJ]	PENRT [MJ]
A1 - A3	70.562	531.141	601.702	417.957	39.775	457.732