

Floor towards attic (uninhabitable) - ddmxxi01a-02

floor towards attic (uninhabitable), solid wood construction, not suspended, dry, other surface

Performance rating

Fire protection performance REI 30

maximum span = 5 m; maximum load $E_{d,fi} = 0,6 \text{ kN/m}^2$
 Classified by HFA

Germany

REI30

Load $E_{d,fi}$ according to the German certification document

Corresponding proof: manufacturer-specific

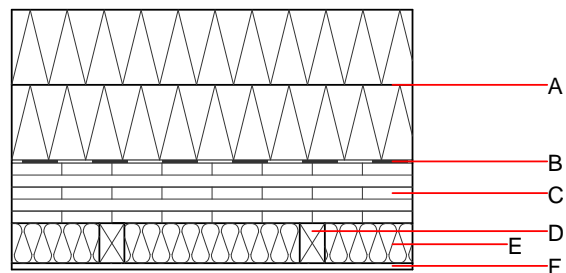
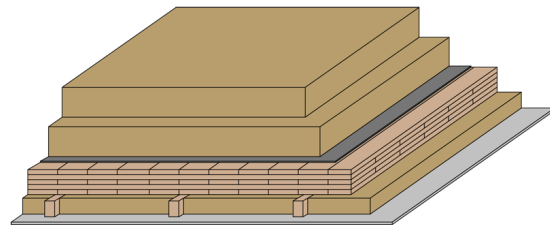
Thermal performance U Diffusion 0.09 $\text{W}/(\text{m}^2\text{K})$ suitable

Calculated by TUM

Acoustic performance $R_w (C; C_{tr})$ 44(-2;-7) dB
 $L_{n,w} (C_i)$

Assessed by Müller-BBM

Mass per unit area m 115.60 kg/m^2



Note: A: pressure-resistant

Register of building materials used for this application, cross-section (from outside to inside, dimensions in mm)

	Thickness	Building material	Thermal performance				Reaction to fire EN
			λ	μ min - max	ρ	c	
A	300.0	mineral wool [040; 130]	0.040	1	130	1.030	
B		foil (air tight)					
C	125.0	cross laminated timber $\geq 125\text{mm}$; 5-ply at least, surface layer at least 27,5	0.130	50	500	1.600	D
D	80.0	spruce wood battens (50/80; e=400)	0.120	50	450	1.600	D
E	80.0	Wood fibre insulation [039; 45]	0.039	1 - 2	45	2.100	E
F	16.0	3-ply solid wood panel	0.110	50	400	2.500	D

Sustainability rating (per m^2)

Database ecoinvent

OI_{kon} 130.0

Calculated by HFA

Database GaBi (ÖKOBAUDAT)

Built-in renewable materials kg 80.620
Biogenic carbon in $\text{kg CO}_2\text{-e}$. kg CO_2 115.960
Energy use of Primary Energy MJ 1500.420
Share of renewable PE % 28.90

Calculated by TUM

Details of sustainability rating

Database ecoinvent

Lifecycle (Phases)	GWP [kg CO ₂ -e.]	AP [kg SO ₂ -e.]	EP [kg PO ₄ -e.]	ODP [kg R11-e.]	POCP [kg Ethen-e.]	
A1 - A3		0.633	0.194	5,74E-6	0.251	

Lifecycle (Phases)	PERE [MJ]	PERM [MJ]	PERT [MJ]	PENRE [MJ]	PENRM [MJ]	PENRT [MJ]
A1 - A3	153.708	1106.311	1260.020	1394.621	43.205	1437.826

Database GaBi (ÖKOBAUDAT)

Lifecycle (Phases)	GWP [kg CO ₂ -e.]	AP [kg SO ₂ -e.]	EP [kg PO ₄ -e.]	ODP [kg R11-e.]	POCP [kg Ethen-e.]	
A1 - A3		0.428	0.065	5,23E-6	0.040	
C1 - C4		0.006	0.012	2,00E-7	0.002	
A1 - C4		0.435	0.077	5,44E-6	0.042	

Lifecycle (Phases)	PERE [MJ]	PERM [MJ]	PERT [MJ]	PENRE [MJ]	PENRM [MJ]	PENRT [MJ]
A1 - A3	431.910	1474.447	1902.577	1033.819	88.021	1121.174
C1 - C4	1.681	-1467.643	-1465.962	31.263	-14.168	17.095
A1 - C4	433.603	6.803	436.626	1066.813	73.853	1140.001